

See discussions, stats, and author profiles for this publication at: <https://www.researchgate.net/publication/335796152>

# EAZA Amphibian Taxon Advisory Group Best practice guidelines for typhlonectid caecilians

Technical Report · September 2019

DOI: 10.13140/RG.2.2.22002.25283

CITATIONS

0

READS

249

10 authors, including:



**Benjamin Tapley**

ZSL

79 PUBLICATIONS 404 CITATIONS

[SEE PROFILE](#)



**David Gower**

Natural History Museum, London

311 PUBLICATIONS 6,618 CITATIONS

[SEE PROFILE](#)



**Christopher Michaels**

Zoological Society of London

55 PUBLICATIONS 242 CITATIONS

[SEE PROFILE](#)



**Alberto Rodriguez Barbon**

Durrell Wildlife Conservation Trust

54 PUBLICATIONS 60 CITATIONS

[SEE PROFILE](#)

Some of the authors of this publication are also working on these related projects:



Conservation of Bermuda land snails [View project](#)



Fitness for the ark: Are zoo bred reptiles and amphibians ready to go back to the wild? [View project](#)

# EAZA Amphibian Taxon Advisory Group

## Best practice guidelines for typhlonectid caecilians

Version 1



Benjamin Tapley<sup>1</sup>, David J. Gower<sup>2</sup>, Christopher J. Michaels<sup>1</sup>, Alberto Barbon<sup>3</sup>, Matt Goetz<sup>3</sup>, Javier Lopez<sup>4</sup>, Adam Bland<sup>4</sup>, Gerardo Garcia<sup>4</sup>, Nathaniel A. Nelson<sup>5</sup>, Mark Wilkinson<sup>2</sup>.

1. Zoological Society of London, Regent's Park, London, NW1 4RY, UK
2. Department of Life Sciences, The Natural History Museum, London SW7 5BD, UK
  3. Jersey Zoo, La Profonde Rue, Trinity JE3 5BP, Jersey
  4. Chester Zoo. Chester CH2 1LH, UK
5. Sedgwick County Zoo 5555 W Zoo Blvd, Wichita, KS 67212, USA

ATAG Chair: Gerardo Garcia, Chester Zoo, United Kingdom, CH2 1LH. ATAG Vice-chairs: Olivier Marquis, Parc Zoologique de Paris, 51 avenue de Saint-Maurice, 75012 Paris, France and Benjamin Tapley Zoological Society of London, Regent's Park, London, United Kingdom.

Published: 2019

**EAZA Best Practice Guidelines disclaimer**

Copyright (2019) by EAZA Executive Office, Amsterdam. All rights reserved. No part of this publication may be reproduced in hard copy, machine-readable or other forms without advance written permission from the European Association of Zoos and Aquaria (EAZA). Members of the European Association of Zoos and Aquaria (EAZA) may copy this information for their own use as needed.

The information contained in these EAZA Best Practice Guidelines has been obtained from numerous sources believed to be reliable. EAZA and the EAZA Amphibian TAG make a diligent effort to provide a complete and accurate representation of the data in its reports, publications, and services. However, EAZA does not guarantee the accuracy, adequacy, or completeness of any information. EAZA disclaims all liability for errors or omissions that may exist and shall not be liable for any incidental, consequential, or other damages (whether resulting from negligence or otherwise) including, without limitation, exemplary damages or lost profits arising out of or in connection with the use of this publication.

Because the technical information provided in the EAZA Best Practice Guidelines can easily be misread or misinterpreted unless properly analysed, EAZA strongly recommends that users of this information consult with the editors in all matters related to data analysis and interpretation.

**Preamble**

Right from the very beginning it has been the concern of EAZA and the EEPs to encourage and promote the highest possible standards for husbandry of zoo and aquarium animals. For this reason, quite early on, EAZA developed the “Minimum Standards for the Accommodation and Care of Animals in Zoos and Aquaria”. These standards lay down general principles of animal keeping, to which the members of EAZA feel themselves committed. Above and beyond this, some countries have defined regulatory minimum standards for the keeping of individual species regarding the size and furnishings of enclosures etc., which, according to the opinion of authors, should definitely be fulfilled before allowing such animals to be kept within the area of the jurisdiction of those countries. These minimum standards are intended to determine the borderline of acceptable animal welfare. It is not permitted to fall short of these standards. How difficult it is to determine the standards, however, can be seen in the fact that minimum standards vary from country to country.

Above and beyond this, specialists of the EEPs and TAGs have undertaken the considerable task of laying down guidelines for keeping individual animal species. Whilst some aspects of husbandry reported in the guidelines will define minimum standards, in general, these guidelines are not to be understood as minimum requirements; they represent best practice. As such the EAZA Best Practice Guidelines for keeping animals intend rather to describe the desirable design of enclosures and prerequisites for animal keeping that are, according to the present state of knowledge, considered as being optimal for each species. They intend above all to indicate how enclosures should be designed and what conditions should be fulfilled for the optimal care of individual species.

**Cover image. *Typhlonectes natans***

**Recommended citation:** Tapley, B., Gower, D.J., Michaels, C.J., Barbon, A., Goetz, M., Lopez, J., Bland, A., Garcia, G., Nelson, N.A. & Wilkinson, M. 2019. EAZA Best Practice Guidelines for typhlonectid caecilians – First edition. European Association of Zoos and Aquariums, Amsterdam, The Netherlands. 47pp.

## Introduction

The information in this Best Practice Guideline has come from a variety of sources including a literature review, the experience of the authors and others in the captive husbandry of typhlonectid caecilians; a caecilian husbandry questionnaire that involved both zoological collections, aquariums and keepers from the private sector as well as direct observations of the species in the field.

Amphibian husbandry is a rapidly evolving field and there are many aspects that require further research. The exact breeding triggers for typhlonectid caecilians are unknown and further research would be beneficial. Typhlonectid caecilians have also tested positive for *Batrachochytrium dendrobatidis* (Bd), the causative agent of the disease chytridiomycosis. Treatment of Bd infections in caecilians has had mixed success. Further research into the epidemiology of the disease in caecilians as well as treatment protocols also require further research.

## Key husbandry points

1. The provision of appropriate seasonal temperature regimes.
2. Monitoring and management of water quality.
3. Preventing escape.

These guidelines have been reviewed and approved by the Amphibian TAG members.

<b>CONTENTS</b>	
<b>SECTION 1. BIOLOGY AND FIELD DATA</b>	<b>5</b>
1.1. TAXONOMY	5
1.2. MORPHOLOGY	6
1.2.1 LENGTH	6
1.2.2 WEIGHT	6
1.2.3 COLOURATION	7
1.2.4 DESCRIPTION	7
1.3 PHYSIOLOGY	9
1.4 LONGEVITY	10
1.5 ZOOGEOGRAPHY, ECOLOGY AND CONSERVATION	10
1.5.1 DISTRIBUTION	10
1.5.2 HABITAT	12
1.5.3 CONSERVATION STATUS AND POPULATION	14
1.6 DIET AND FEEDING BEHAVIOUR	15
1.6.1 FOOD PREFERENCE	15
1.6.2 FEEDING BEHAVIOUR	15
1.7 REPRODUCTION	15
1.7.1 DEVELOPMENTAL STAGES TO SEXUAL MATURITY	15
1.7.2 AGE OF SEXUAL MATURITY	17
1.7.3 SEASONALITY OF CYCLING	17
1.7.4 GESTATION PERIOD	18
1.7.5 NUMBER OF OFFSPRING	18
1.7.6 BIRTH DETAILS AND SEASON	18
1.8 BEHAVIOUR	18
1.8.1 ACTIVITY	18
1.8.2 LOCOMOTION	18
1.8.3 PREDATION	18
1.8.4 VOCALISATION	18
1.8.5 SOCIAL BEHAVIOUR	18
1.8.4 SEXUAL BEHAVIOUR	19
<b>SECTION 2. MANAGEMENT IN ZOOS AND AQUARIA</b>	<b>19</b>
2.1 ENCLOSURE	19
2.1.1 SUBSTRATE	20
2.1.2 FURNISHING AND MAINTENANCE	20
2.1.3 WATER	21
2.1.4 TEMPERATURE	22
2.1.5 FILTRATION	22
2.1.6 PH	22
2.1.7 HARDNESS AND ALKALINITY	23
2.1.8 DISSOLVED OXYGEN	23
2.1.9 LIGHTING	23
2.2 FEEDING	23
2.2.1 BASIC DIET	24
2.2.2 SPECIAL DIETARY REQUIREMENTS	24
2.2.2 METHOD OF FEEDING	24
2.3 SOCIAL STRUCTURE	25
2.3.1 CHANGING SOCIAL STRUCTURE	25
2.3.2 SHARING ENCLOSURE WITH OTHER SPECIES	25
2.4 BREEDING	25
2.4.1 MATING	26
2.4.2 GESTATION PERIOD	26
2.4.3 BIRTH	27
2.4.4 DEVELOPMENT AND CARE OF YOUNG	28
2.4.5 POPULATION MANAGEMENT	29
2.5 BEHAVIOURAL ENRICHMENT	29
2.6 HANDLING	29
2.6.1 INDIVIDUAL IDENTIFICATION AND SEXING	29
2.6.2 CATCHING / RESTRAINING	31
2.6.3 TRANSPORTATION	31
2.6.4 SAFETY	31
2.7 <b>VETERINARY CARE AND SPECIFIC MEDICAL PROBLEMS: CONSIDERATIONS FOR HEALTH AND WELFARE</b>	31
2.7.1 CLINICAL ANATOMY AND PHYSIOLOGY	31
2.7.2 PHYSICAL EXAMINATION AND DIAGNOSTICS	32
2.7.3 DISEASES	34
2.7.4 THERAPEUTICS	36
2.7.5 ANAESTHESIA	37
2.7.6 SURGERY	39
2.8 RECOMMENDED RESEARCH	42
ACKNOWLEDGEMENTS	42
<b>SECTION 3. REFERENCES</b>	<b>43</b>
APPENDIX – POST MORTEM OF FEMALE <i>T. NATANS</i>	47

## SECTION 1. BIOLOGY AND FIELD DATA

### 1.1 TAXONOMY

The Neotropical caecilian family Typhlonectidae includes 14 currently recognised species in five genera (Wilkinson *et al.*, 2011). Most of these species are quite poorly known but the three somewhat better known species of typhlonectids considered here are part of a group of four seemingly most aquatic species of the family. The fourth species, the giant lungless and rarely encountered *Atretochoana* has not been maintained in captivity.

ORDER: Gymnophiona Müller, 1832.

FAMILY: Typhlonectidae Taylor, 1968.

GENUS: *Typhlonectes* Peters, 1880.

SPECIES: *T. compressicauda* (Duméril & Bibron, 1841).  
*T. natans* (Fischer, In Peters, 1880).

GENUS: *Potomotyphlus* (Taylor, 1968). Note that the alternative spelling *Potamotyphlus* has been advocated but we prefer to maintain common usage here.

SPECIES: *P. kaupii* (Bethold, 1859).

#### COMMON NAMES

*Typhlonectes* spp. Rubber Eel, Caecilian worm, Aquatic caecilian.

*T. natans*: Rio Cauca Caecilian, Anguilla.

*T. compressicauda*: Cayenne Caecilian, le molle (French Guiana).

*Potomotyphlus kaupii*: Kaup's caecilian.



Figure 1. Adult female *Typhlonectes natans*



## 1.2 Morphology

### 1.2.1 LENGTH (ADULT)

<i>T. natans</i>		250–725mm total length (Duellman & Trueb, 1994).
<i>T. compressicauda</i>	Females	285–800mm total length (Moodie, 1978).
	Males	262–585mm total length (Moodie, 1978).
<i>P. kaupii</i>	Up to	695mm total length (Taylor, 1968).



Figure 2 (Left) Adult *Potamotyphlus kaupii*. Figure 3 (Right) Highly vascularised skin of *Potamotyphlus kaupii*.

### 1.2.2 WEIGHT

Weights from wild adult *T. natans* of undetermined reproductive status captured in November 2008 (Guarinócity, Colombia) are presented in Table 1. In captivity *T. natans* may double their weight prior to giving birth; Kowalski (2001) reports an adult female *T. natans* weighing 250.0g prior to giving birth. On average captive female *T. natans* were 46% lighter after giving birth at Durrell Wildlife Conservation Trust.

Sex	Total length (mm)	Weight (g)
Female	434.0	52.6
Female	439.0	55.5
Female	413.0	51.1
Female	637.0	172.2
Female	415.0	57.3
Male	374.0	37.9

Table 1. Length and mass data for *Typhlonectes natans* captured in November; Guarinócity, Colombia 2008.

There are no published records of the weight of wild *T. compressicauda* or *P. kaupii*. The weights of captive *P. kaupii* at ZSL London Zoo ranged from 60.4–113.6g

### 1.2.3 COLOURATION

*T. natans* are typically dark purplish/bluish-grey with a paler ventral surface (Fig. 1) and *T. compressicauda* are typically dark (sometimes blackish) grey to dark brown with a slightly paler ventral surface. *T. natans* often appear slightly more glossy and with more clearly demarcated annular grooves than the often more velvety appearing *T. compressicauda*. *P. kaupii* (Figs. 2 & 3) are dark grey-brown to pale lilac-grey with darker, purplish annular grooves.

### 1.2.4 DESCRIPTION

Like all caecilians, typhlonectids are legless and elongate. Unlike other caecilians the aquatic typhlonectids have a dorsal fold or fin. Superficially, their bodies are wormlike due to the presence of cutaneous folds or grooves; each fold is known as an annulus or ring, with adjacent annuli separated by annular grooves that may be more or less well indicated and mostly are interrupted by the fin and thus not continuous across the dorsum. The eyes are small and covered with more or less translucent skin and the mouth is recessed (below a prominent snout). There is a (probably chemo- and mechanosensory) tentacle on each side of the head, very slightly protruding from an aperture behind and slightly below the small external nostril.

Externally and superficially it can be difficult to tell *T. natans* and *T. compressicauda* apart. *T. compressicauda* has a low, more or less prominent (even varying in life in single individuals), laterally compressed dorsal fin situated along at least the caudal third of the body, this fin is usually far less developed in *T. natans*. In typhlonectids, the vent is situated on a cloacal disc close to the terminus of the body (Wright & Whitaker, 2001). A true tail is absent (Taylor, 1968) although there some vertebrae posterior to the level of the vent (Wilkinson, 1989), with only a very short distance lying between the vent and the posterior terminus of the body. The most reliable characteristic to differentiate *T. natans* and *T. compressicauda* externally is the form of the disc surrounding the vent. The anterior half of the 'cloacal' disc is divided into 5 sections (denticulations) in *T. compressicauda* and into 4 in *T. natans* (Fig. 4 & 5). The posterior half of the cloacal disc is divided into five sections in both *T. natans* and *T. compressicauda*. Tooth crown morphology differs between *T. natans* and *T. compressicauda*, the tooth crowns of the latter are broadly dilated and this is more prominent in neonates (Fig. 6). The number of annuli, vertebrae and lung lengths may also be used to differentiate between *T. natans* and *T. compressicauda* (Wilkinson, 1991).

*P. kaupii* may possess a low, middorsal ridge as well as a dorsal fin. The head, collar and anterior of the body are smaller than in *Typhlonectes*, and they have relatively numerous narrow pointed teeth. The cloacal disk has a distinctive key-hole shape with an elongate anterior part. Unlike *Typhlonectes*, the choanae (internal nostrils) are partially sealed with a concealed aperture (Wilkinson and Nussbaum, 1997).



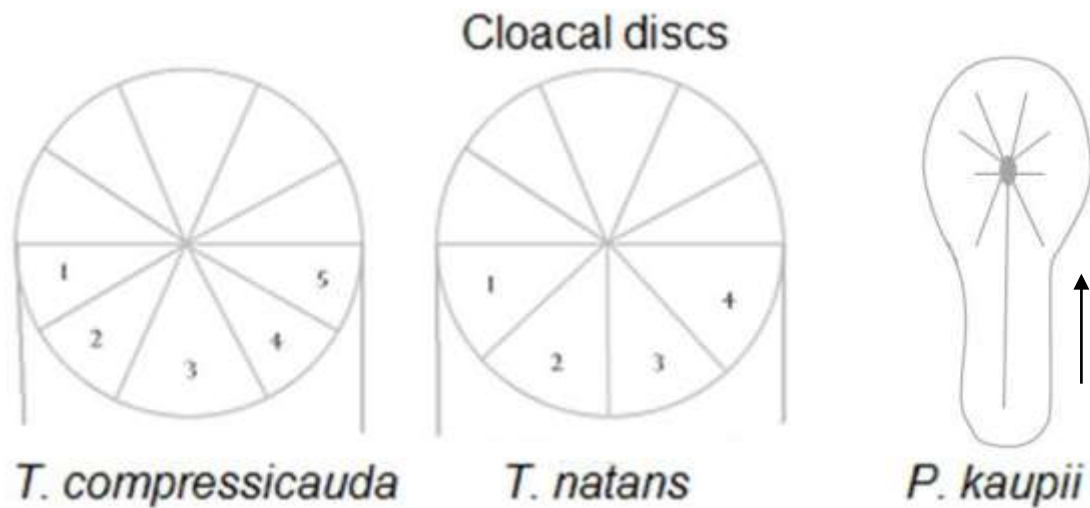


Figure 4. Cloacal discs (region surrounding the vent) showing the differences in anterior denticulations forming the vent in *Typhlonectes natans*, *T. compressicauda* and *Potomotyphlus kaupii*. Arrow points posteriorly.



Figure 5. The cloacal disc in *Typhlonectes compressicauda* © Ian Stephen (Top) and *Typhlonectes natans* (Bottom) photos by the authors.

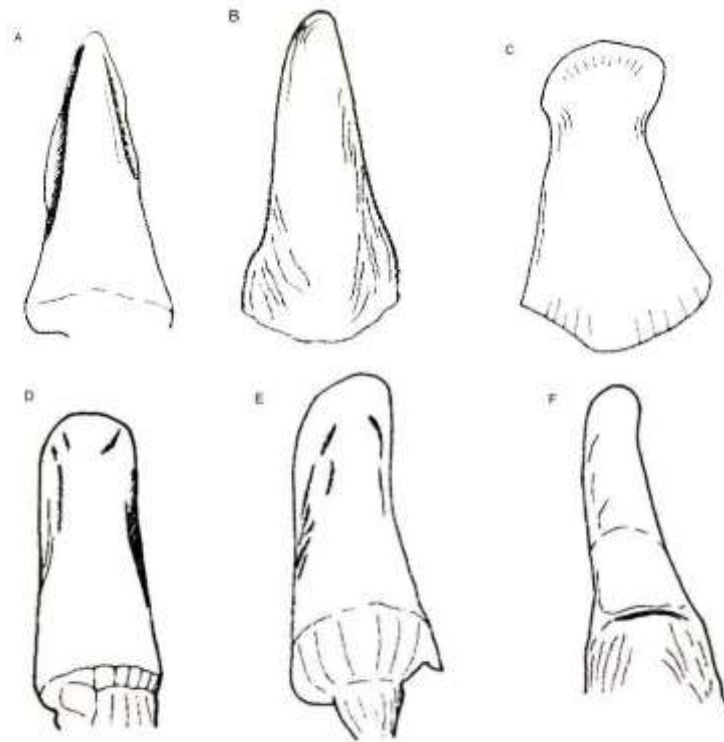


Figure 6. Dentition of A-B *Typhlonectes natans*, C-F *Typhlonectes compressicauda*, C: new born, D-F: adult . From Wilkinson, 1991.

### 1.3 PHYSIOLOGY

#### RESPIRATORY RATE

Frequency of lung ventilation for *T. natans*  $6.33 \pm 0.84$  breaths  $\text{hr}^{-1}$  (Prabha *et al.*, 2000). Caecilians use a buccal pump, with cyclical lowering of the floor of the mouth to suck in air through their nostrils and raising of the floor of the mouth to pump this air into the lungs. Exhalation is passive and facilitated by the elasticity of the lungs and their intrinsic cartilages. Multiple iterations of the buccal pump are required to fill the lungs. There is surprisingly little information on the frequency of lung ventilation, and the duration and number of pulses of the buccal pump that are involved in each episode of lung ventilation.

#### GAS EXCHANGE

94% of gaseous exchange for *T. compressicauda* is derived from pulmonary respiration (Sawaya, 1947). They are capable of drowning.

In *P. kaupii* the left lung is shorter than the right and it is exceptionally broad and sac-like, lacking any respiratory epithelium. It presumably serves as a hydrostatic organ, more important in the control of buoyancy than in respiration (Wilkinson & Nussbaum, 1997). *P. kaupii* exhibit a concomitant reduction in the capacity of its buccopharyngeal force pump, associated with their relatively small heads, indicating a reduction in the importance of pulmonary gas exchange and increased reliance on cutaneous gas

exchange (Wilkinson & Nussbaum, 1997). *P. kaupii* can appear pinkish in life and the skin appears to be highly vascularised (Fig. 3), this may be an adaptation due to an increased reliance on cutaneous gas exchange.

#### 1.4 LONGEVITY

The maximum recorded age for *T. natans*, 13 years (captive). *P. kaupii* obtained as adults in 2008 by Sedgwick County Zoo are still alive at the time of writing. Captive *T. compressicauda* can live for at least 8 years (individuals still living; M. Wilkinson pers. obs.).

### FIELD DATA

#### 1.5 ZOOGEOGRAPHY / ECOLOGY

##### 1.5.1 DISTRIBUTION

*T. natans* - Cauca and Magdalena drainages of Colombia and north-eastern Venezuela (Fig. 7) Tapley & Acosta (2010) hypothesise that *T. natans* may occur further south in the Magdalena valley (High Magdalena) than Figure 5 implies. This region requires further investigation to ascertain the presence or absence of this species in the area. Tapley & Acosta (2010) also suspect that *T. natans* may occur further south to the source of the Urrá river.

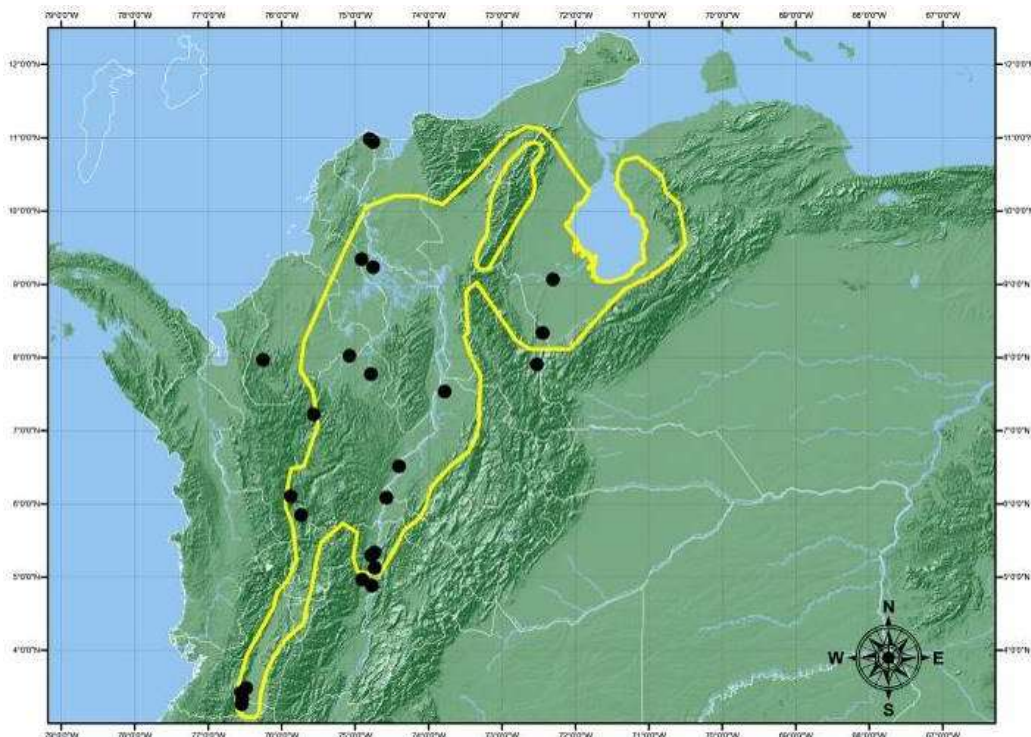


Figure 7. The distribution of *Typhlonectes natans* after Tapley & Acosta, 2010

*T. compressicauda* - Rivers of the Guianan shield and the Amazon basin from the eastern coast of Brazil to the Atlantic slopes of the Peruvian and Colombian Andes (Fig. 8)



Figure 8. The distribution of *Typhlonectes compressicauda* after IUCN *et al.*, 2008. Red dots represent a relatively recent record for Colombia (Maciel & Hoogmoed, 2011).

*P. kaupii* - The drainage systems of the Orinoco and Amazon (Fig. 9) (Oliviera *et al.*, 2012) below 500m asl. (Wilkinson *et al.*, 2010). The most southerly reported location southern extent of its distributional range is poorly known (Marty *et al.*, 2007 Wilkinson *et al.*, 2010).

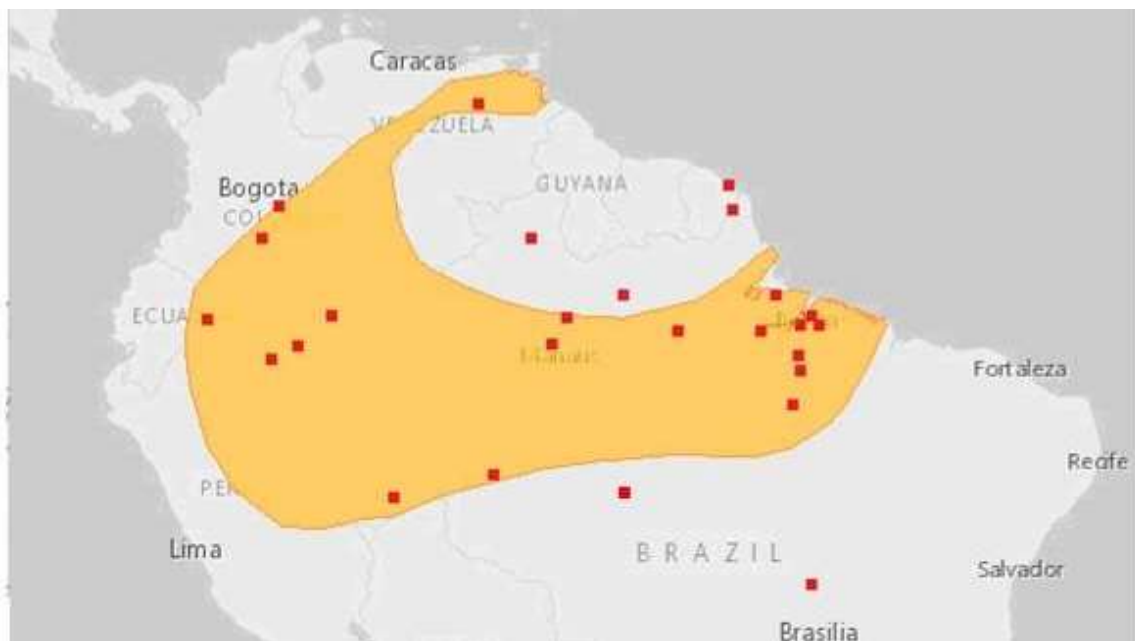


Figure 9. The distribution of *Potomotyphlus kaupii* after Wilkinson *et al.*, 2010; Oliviera *et al.*, 2012 and Alves-Silva *et al.*, 2017. Red dots represent records from South America. Orange area represents the distribution of *Potomotyphlus kaupii* according to the IUCN.



### 1.5.2 HABITAT

*T. natans* - Is an aquatic species, living in rivers, marshes and lakes (Fig. 10), usually in open areas, and is only rarely found on land (IUCN *et al.*, 2008). *T. natans* has been recorded in eutrophic waters in synanthropic and urbanised habitats in Venezuela (Gower & Wilkinson, 2005).

In Colombia, *T. natans* is associated with alluvial flood plains of the Magdalena and Cauca rivers. *T. natans* appear to migrate to the flood plains, against the flow of water during the wet season. (Tapley & Acosta, 2010) and is commonly encountered in floating mats of aquatic vegetation (Figs 10 & 11). In Colombia there are seasonal changes in water temperature (Fig. 16). In Colombia, during the wet season the water in creeks inhabited by *T. natans* were soft and slightly acidic (Table 2).

*T. compressicauda* - Is an aquatic species, inhabiting permanent rivers, ponds and marshes (Figs. 12-14), mainly in the lowland forest zone (IUCN *et al.*, 2008). Moodie (1978) reports that *T. compressicauda* inhabits water filled burrows. Water parameters were recorded in a pond near Cayenne (Fig. 12), French Guiana where *T. compressicauda* are known to occur, water pH 5.5 - 6; water temperature, 28.0°C; 0.9dKH (D.J. Gower & M. Wilkinson, unpublished data). Water parameters have also been reported from the Colombian Amazon where, in the month of July, a single individual was found in a cavity within a submerged log in a clear water stream: water pH 6.16; water temperature 25.4 °C; conductivity 30 µS / cm; and total dissolved solids 15 ppm (Acosta-Galvis *et al.*, 2014).

*P. kaupii* - Little is known about the ecology of *P. kaupii* (Wilkinson, 1997), this probably reflect the difficulties of collecting in rivers and the low frequency of herpetological collections in such habitats (Lynch, 2006). *P. kaupii* is an aquatic species that occurs in rivers, streams, large and small lakes, and flooded plains (Wilkinson *et al.*, 2010). Specimens have been collected beneath rocks in shallow water (Wilkinson, 1997). Water parameters were recorded at Saut Maripa (Fig, 15), French Guiana where *P. kaupii* are known to occur: pH 6.8; 26.7°C; 0.3-0.6dKH (D. Gower & M Wilkinson, unpublished data).



Figure 10 (top left). Habitat of *Typhlonectes natans*, Victoria, Colombia. Figure 11 (Top right). Habitat of *T. natans*, Victoria, Colombia. Figure 12 (middle left). Habitat of *T. compressicauda*, pond near Cayenne, French Guiana. Figure 13 (middle right). Habitat of *T. compressicauda*, slow moving part of the river Oyapock between French Guiana and Brazil. Figure 14 (bottom left). Habitat *Potomotyphlus kaupii*, pool near Saut Maripa, Oyapock river, French Guiana of Saut Maripa. Figure 15 (bottom right). Habitat of *P. kaupii*, Saut Maripa, French Guiana.



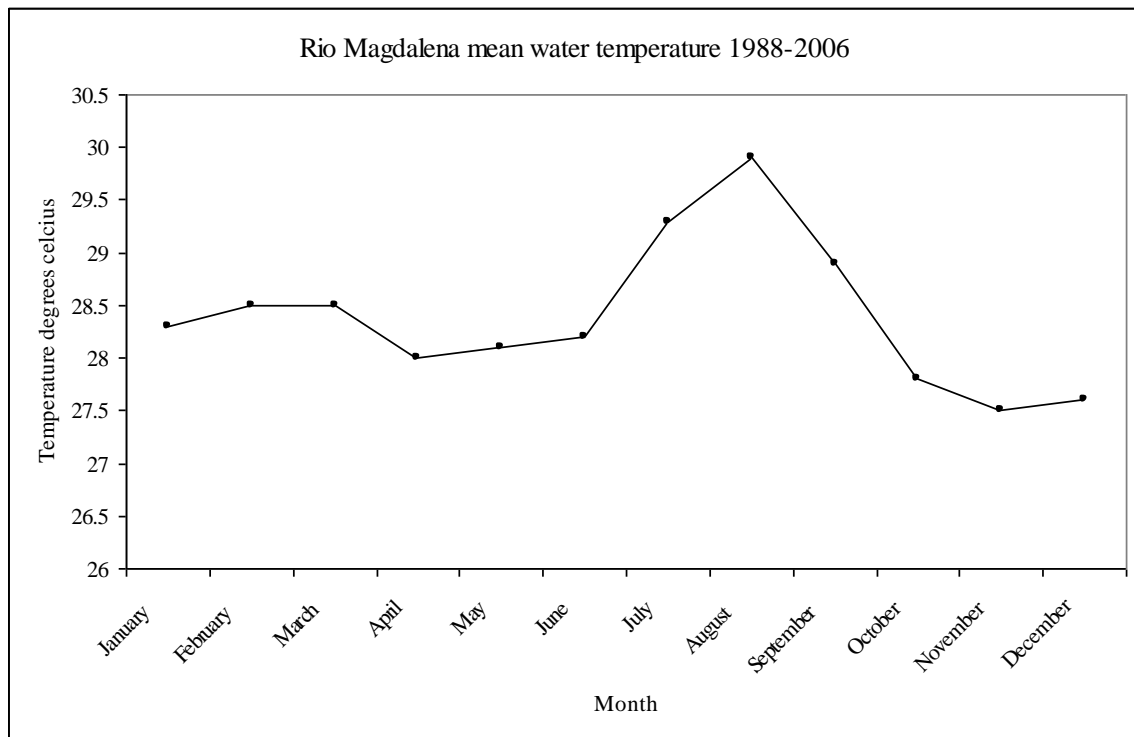


Figure 16. The mean temperatures of the Rio Magdalena at Honda from 1988 – 2006 , after Tapley & Acosta 2010.

---

Water temperature (°C)	28.2 - 30.7
pH	6.17 - 7.06
Ammonia (ppm)	0.00 - 0.25
Nitrite (ppm)	0.00
Nitrate (ppm)	0.00 - 10.00
GH (ppm)	71.6 - 107.4
KH (ppm)	71.6 - 107.4

---

Table 2. water parameter ranges from the Rio Magdalena in Colombia, November 2008 (Tapley & Acosta, 2010).

### 1.5.3 CONSERVATION STATUS & POPULATION

*T. natans* - Assessed as Least Concern in view of its wide distribution, tolerance of at least some habitat degradation, presumed large population, and because it is unlikely to be declining fast enough to qualify for listing in a more threatened category (IUCN *et al.*, 2008).

*T. compressicauda* - Assessed as Least Concern in view of its wide distribution, presumed large population, and because it is unlikely to be declining fast enough to qualify for listing in a more threatened category (IUCN *et al.*, 2008).

*P. kaupii* – Assessed as Least Concern in view of its wide distribution, presumed large population, and because it is unlikely to be declining to qualify for listing in a more threatened category (Wilkinson *et al.*, 2010).

## 1.6 DIET AND FEEDING BEHAVIOUR

### 1.6.1 FOOD PREFERENCE

Hofer (2000) notes that typhlonectids can be particularly abundant around fishing villages where they have been observed feeding on the discarded entrails of fish. This has been widely noted and supports the idea that wild typhlonectids might be scavengers as well as predators (Kupfer et al., 2006).

*T. compressicauda* – In the wild juveniles of this species consume oligochaete worms, aquatic invertebrates, terrestrial invertebrates, and anuran larva and eggs (Verdade et al., 2000). Gut contents of wild specimens also contained large amounts of detritus and plant matter which could have been ingested accidentally or indicate partial detritivorous habits (Verdade et al., 2000). *T. compressicauda* has been observed feeding on dead fish caught in nets (Exbrayat & Delsol, 1985) and have been caught in fish traps baited with dead fresh and tinned fish (Kupfer et al., 2006) and hauled in with dead fish on rope in French Guiana. In Manaus the stomach contents of adult *T. compressicauda* included shrimp and arthropods, local fishermen reported that the species also feeds on small fish and they have been captured by hand after being attracted to fish scraps thrown into the water, (Moodie, 1978).

Little is known about the wild diet of *T. natans*. Tapley & Acosta (2010), observed *T. natans* feeding on the entrails of fish which had been discarded in the water in Colombia, and the same is reported by local fisherman for populations in Lago Maracaibo, Venezuela.

Little is known about the wild diet of *P. kaupii*, but they have been captured in aquatic traps using cooked shrimp and raw fish (Rendle et al., 2015).

### 1.6.2 FEEDING BEHAVIOUR

*T. compressicauda* - Carnivorous and generalistic. Juvenile, wild specimens have been observed actively foraging in shallow water at night. Analysis of gut contents found that prey items associated with the bottom of the aquatic habitat as well as items associated with the surface; perhaps encountered when caecilians surface to breathe (Verdade et al., 2000).

## 1.7 REPRODUCTION

### 1.7.1 DEVELOPMENTAL STAGES TO SEXUAL MATURITY

Viviparity is characteristic of all typhlonectid caecilians. Development of the embryo is supported by yolk reserves (Wake, 1977). These yolk reserves are rapidly depleted. Embryonic *T. compressicauda* may increase their length six times by the time their yolk is fully absorbed (Stebbins & Cohen, 1995). Once the yolk is depleted the embryos emerge from their egg membranes and uncurl, foetuses are able to freely move along the length of the oviduct and they align themselves lengthways in the oviduct (Pough et al., 2002) or they may fold back along themselves. The foetuses are sustained by lipid rich epithelial walls of the oviduct. Foetuses have well developed dentition, which is very different to the dentition of the adults (Fig. 17). The mandibular teeth in foetal

typhlonectids are numerous, not arranged in regular rows and extend external to the buccal cavity. These specialised teeth appear to be used to scrape the oviductal epithelium, which possibly stimulates the formation of the nutrient rich and hypertrophied epithelium (Wake, 1976). The snout is less prominent in foetal typhlonectids (Fig. 8), this probably facilitates the scraping manner in which they feed (Wilkinson, 1991). The specialised, deciduous teeth of foetal typhlonectids have been termed ‘vernal’ teeth in caecilians because similar teeth are seen also in hatchlings of some oviparous caecilians (i.e. species that lack a foetal stage) (San Mauro *et al.*, 2014).

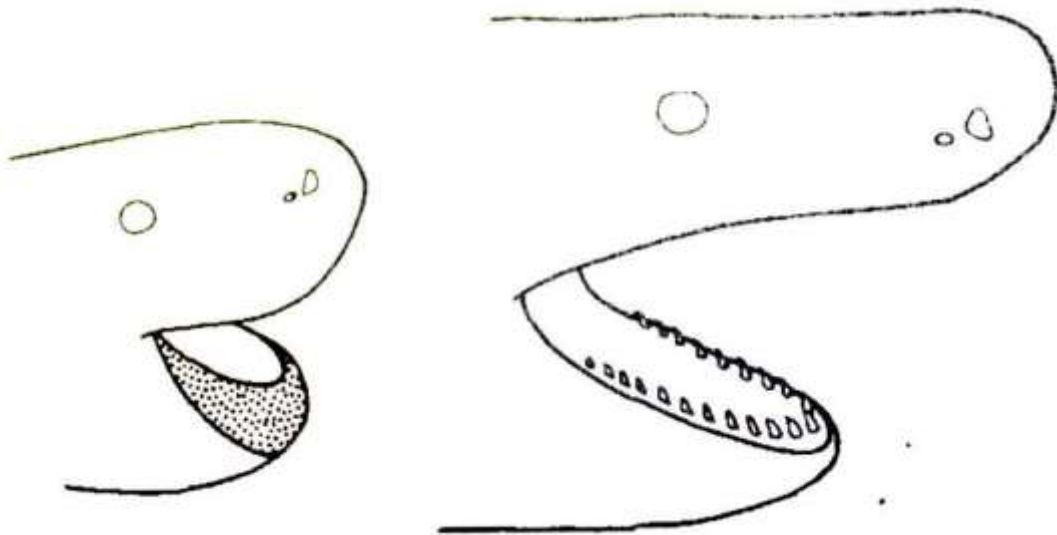


Figure 17. Mandibular tooth disposition and head shape in foetal (left) and adult (right) typhlonectids. From Wilkinson, 1991.



Figure 18. *T. natans* newborn with external gills (Left) and the temporary indentation (scar) that is left once the gills drop off (Right)

The foetuses of *Typhlonectes* species develop very large, highly vascularised leaf like gills (Fig. 18) which are probably used for gas exchange across the maternal uterine wall (Wells, 2007). Oxygen affinity of foetal blood in *T. compressicauda* is higher than that of adult blood (Garlick *et al.*, 1979). It has also been suggested that the gills may uptake nutrients. Gills are lost within several hours after birth (Parkinson, 2004). Newborn *T. compressicauda* may measure 40% of the female’s total length (Stebbins & Cohen,

1995). *P. kaupii* are born with external gills similar in structure to those of *Typhlonectes*, although the gills are more transparent (N. Nelson pers. obs.). In *P. kaupii* gills are often lost during birth although some have retained the gills for a couple of hours after birth (N. Nelson pers. obs.).

### 1.7.2 AGE OF SEXUAL MATURITY

In captivity, *T. compressicauda* attain sexual maturity at 16 months (Exbrayat & Delsol, 1985).

The age at which *T. natans* reach sexually maturity in the wild is unknown. In captivity, a female was recorded being sexually mature at approximately 4 years of age (Ilze Duncce pers. com.).

The age at which *P. kaupii* reach sexually maturity in the wild or in captivity is unknown.

### 1.7.3 SEASONALITY OF CYCLING

The reproductive biology of typhlonectids in the wild has not been studied in great detail. One study on *T. compressicauda* in French Guiana found that males have a yearly cycle of spermatogenesis, which occurs from June to July; copulation occurs between February and May (Exbrayat & Delsol, 1985). Females have a biennial cycle (Fig. 19). During the first year, females are vitellogenic from October to February. This period is when ovulation occurs and gestation begins. Parturition occurs between July and October. Vitellogenesis occurs once again but very quickly. During the second period of reproduction, oocytes are not mature, and they degenerate becoming atretic follicles (Exbrayat & Delsol, 1985).



Figure 19. The biennial sexual cycle of female *Typhlonectes compressicauda* (after Raquet et al., 2107).

It is thought that the reproduction of *T. compressicauda* is related to seasonal variation in rainfall. During the wet season, there is an increased supply of food and this is when spermatogenesis, copulation and gestation occur (Exbrayat & Delsol, 1985).

*T. natans* is reportedly a seasonal breeder, breeding occurs during the wet season (Herman, 1994).

The reproductive biology of *P. kaupii* is unknown other than that the species is viviparous (Wilkinson et al., 2010).

#### 1.7.4 GESTATION PERIOD

In the wild gestation in *T. compressicauda* lasts six months (Exbrayat & Delsol, 1985). In captivity the gestation period of *T. natans* is approximately 7 months (Reinhard, 2014) and *P. kaupii* gestation period is unknown.

#### 1.7.5 NUMBER OF OFFSPRING

In the wild *T. compressicauda* give birth to on average 4 young (Exbrayat & Delsol, 1985). In captivity an average of 3 young are born (Exbrayat & Delsol, 1985).

The number of offspring produced by *T. natans* and *P. kaupii* in the wild is unknown.

#### 1.7.6 BIRTH DETAILS AND SEASONS

Young of *T. compressicauda* are born at the beginning of the dry season i.e. when water levels are still high (Exbrayat & Delsol, 1985).

Birth details and seasons of *T. natans* and *P. kaupii* in the wild are unknown.

### 1.8 BEHAVIOUR

#### 1.8.1 ACTIVITY

Activity patterns of typhlonectids in the wild are largely unknown. However, *T. compressicauda* has been observed foraging in shallow water at night (Verdade *et al.*, 2000). In captivity typhlonectids can be active and forage at any time.

#### 1.8.2 LOCOMOTION

Lateral undulation; can also be supported by some worm-like concertina-motion when on rough ground above the water surface or squeeze through small gaps both under and above water (M. Goetz, pers. obs.).

#### 1.8.3 PREDATION

Local fisherman report that *T. compressicauda* are consumed by *Arapaima gigas* (Moodie, 1978). Not known. Other caecilians, including typhlonectids are known to be eaten by snakes and potentially birds (e.g. Taylor, 1968; Kupfer *et al.*, 2003; Bittencourt-Silva & Wilkinson, 2018; Gonzalez *et al.*, 2018).

#### 1.8.4 VOCALISATION

In captivity, a squeaking sound has been reported in typhlonectids when they surface to breathe (Stebbins & Cohen, 1995). This is probably involuntary, caused by movement of air.

#### 1.8.5 SOCIAL BEHAVIOUR

In captivity typhlonectids are gregarious and share refugia. Refugia sites are perhaps marked with chemical signals, and individuals are attracted to chemicals emanated by conspecifics (Warbeck *et al.*, 1996), though this has not been studied in detail. A captive study on *T. natans* showed breeding males in captivity may be aggressive towards one another but not necessarily territorial (Warbeck & Parzefall, 2001). Males have also been observed to chase and bite females in captivity (G. Garcia, pers. obs.). A

laboratory study showed that non-reproductive females preferred chemical cues from other females over male chemical cues. Reproductive males preferred cues from receptive females to unreceptive females and did not discriminate between related and unrelated females (Warbeck & Parzefall, 2001).

### 1.8.6 SEXUAL BEHAVIOUR

There are not many records of mating in caecilians. One observation of *T. natans* showed that males entwine themselves around females vent to vent. Other reports indicate that there is often little/no entwining in *T. natans*, at least after an initial period and that the female continues to swim freely, dragging the male around by his phallus. Fertilisation is internal; the males introducing the phallosome, the intromittent organ of the caecilian (Fig. 20), into the cloaca of the female. Mating initially is frenzied but activity soon subsides. The pair can remain entwined for several hours (Parkinson, 2001). Murphy (1978) noted that copulation continued for three hours in *T. compressicauda* after it was first observed.



Figure 20. A preserved male *Typhlonectes natans* illustrating the phallosome in its everted state.

## SECTION 2. MANAGEMENT IN CAPTIVITY

*This section has been completed with the help and support of private keepers, Zoological institutions, museums and Aquaria. Questionnaires were sent out to many typhlonectid keepers. We received 12 responses. There was a great deal of knowledge held by all sectors and their responses to the questionnaire have been invaluable when compiling these guidelines.*

### 2.1 ENCLOSURE

The enclosure must be aquatic and are recommended to have a small, wet land area; although a large piece of floating cork bark or dense mat of floating vegetation will



suffice. The larger the enclosure the better. A larger volume of water is especially important to buffer against fluctuations in water parameters, which are sub optimal. A 180 L aquarium would be suitable to a trio of *T. compressicauda* or *P. kaupii* and a 250 L aquarium would be suitable to a trio of *T. natans* provided large external canister filters were provided for filtration. The land area should ideally have crevices in which the animals can lie.

### 2.1.1 SUBSTRATE

For easy maintenance and monitoring a substrate is not essential when keeping typhlonectids. If substrate is required, aquarium sand and aquarium pea gravel have both been used successfully. Sand may provide anoxic conditions for nitrate removal but anoxic sand beds, especially when thick, may also produce toxic gases such as hydrogen sulphide. Caecilians may spend significant amounts of time buried in the sand if this particular substrate is used, and for this reason it should be recommended.

### 2.1.2 FURNISHINGS AND MAINTENANCE

Refugia should be provided, to allow animals to congregate beneath or inside it. PVC pipes, rocks, bog wood and terracotta can be used. Rough edges of refugia will facilitate skin shedding, these edges should not be sharp, however. Refugia should provide tight crevices, into which the caecilians can squeeze. For aesthetically pleasing exhibits aquatic plants can be added; however, plants are often uprooted or damaged during shedding or feeding frenzies so free-floating plants might be the better option. *Ceratophyllum* species has been reported by one keeper to be an excellent shedding aid. In the field *T. natans* have been found in floating mats of aquatic vegetation. If this is recreated in captivity *T. natans* and *T. compressicauda* will spend considerable amounts of time in the vegetation mat and are easy to see. Floating mats of vegetation may make exhibiting this species in zoos and aquaria easier. Watercress (*Rorippa nasturtium*) has been used successfully for this purpose. Importantly, live aquatic plants will also reduce nitrate, nitrite and ammonia levels in aquaria. These nitrogenous waste products are toxic to aquatic organisms.

As mentioned above, the provision of a wet land area is recommended for *Typhlonectes* (*Potomotyphlus* does not require this as they do not leave the water). A floating section of cork bark or dense mat of emergent vegetation is commonly used. Water parameters and animal health should be checked if caecilians are found to be on this terrestrial area for long periods of time because this might indicate problems with water quality or temperature.

Partial water changes of 10 – 20% should be carried out on a regular basis (the frequency would be dependent on the volume of water in the aquarium, amount of live plants used, amount of constant fresh-water influx, stocking density). Smaller, densely stocked aquaria will often require more water changes than larger aquaria with fewer animals. If tap water is used it should be treated with a water conditioner and allowed to stand at aquarium temperature, while being well aerated, for 24 hours before it is added to the aquaria to neutralise or remove toxic contaminants; chlorine removal can be facilitated and expedited by inserting an aeration stone. Water should also be preheated to match the water temperature of the enclosure it is to be added to in order to prevent temperature shock. If the parameters of the tap water are unsuitable for

typhlonectids, re-mineralised rainwater or remineralised reverse osmosis (RO) water can be used. Water changes should ideally be carried out after feeding so that uneaten food and faeces are removed from the aquaria as quickly as possible before they have the chance to decay. The filter media should be cleaned regularly in water taken from the aquarium to preserve beneficial filtration bacteria within which commonly die when flushed with water of different parameters and/or temperature again, the schedule of filter maintenance will depend on filter type and size, stocking density, and feeding regime. There is a tendency for typhlonectids to squeeze into filtration tubes and the filters themselves and this can result in severe injury or drowning. Filter tubes and filters should be well protected to prevent such access.

### 2.1.3 WATER

Typhlonectids are commonly kept in tap water. If tap water is to be used, the municipal water provider should be contacted to get detailed information on water parameters, as the parameters will vary dramatically both geographically and temporally. Water parameters from tap water can vary greatly on a day-to-day basis. Re-mineralised rainwater can be collected. However, pure reverse osmosis water or pure rainwater should be used with caution with amphibians, and not at all with typhlonectid caecilians, because it is too pure and may interfere with the osmotic balance of the caecilian.

The water should be deep enough to provide the animals with adequate space to swim and to reach the surface without losing contact with the substrate, plants or larger hides. The lowering of the water level to 18cm was one of the factors attributed to the breeding of *T. natans* by one breeder (Parkinson, 2004).

“You can-not manage what you do not measure”. Water quality should be tested on a regular and frequent basis (ideally weekly as routine); this will allow the performance of filtration systems to be assessed, it can identify one-off problems or recurring issues and assess corrective measures. The most important routine tests to perform are those for nitrogenous waste (ammonia, nitrite and nitrate), pH, and hardness/alkalinity.

Fluctuating water parameters can be very stressful for aquatic organisms. It is better to have slightly suboptimal parameters than wildly fluctuating parameters. At Jersey Zoo the tap water supply (well / borehole water) was unsuitable for aquatic caecilians as it was contaminated with nitrates from agricultural run-off. Reverse osmosis (RO) water was reconstituted with a remineralisation solution (sodium bicarbonate) which matched the water parameters presented in Table 2 and an alkalinity of c. 70mg/L. A test for general hardness was used periodically to check that salts were not becoming concentrated as the tank water evaporated (dGH range between 3-8).

Historically, at ZSL London Zoo RO water was used for *T. natans*, *T. compressicauda* and *P. kaupii*. This was remineralised with sodium bicarbonate to achieve an alkalinity of 60mg/l and pH of 7.8. However, the plant growth in this water was suboptimal and parameters were unstable. Tap water diluted with RO water is used (1:9) and tannins are added to achieve an alkalinity of c. 70mg/L and a pH of about 6.5 (the tannins suppress the pH).

#### 2.1.4 TEMPERATURE

Water temperature should be between 24 – 30 °C for *Typhlonectes* sp. (see Fig. 16 for details of seasonal fluctuations) and between 26 – 29 °C for *Potomotyphlus kaupii*. Aquarium heaters can be used for this purpose but ensure that heater guards are used; typhlonectids often lie wrapped around heaters and having a guard can prevent the risk of burns. The use of inline heaters avoids this risk. Ideally, more than one heater should be used to allow for redundancy.

When the temperature regime presented in Fig. 16 was implemented at Jersey Zoo, breeding of *T. natans* was achieved. However, it is unproven whether or not the breeding was due to a change in temperature regime or whether the specimens had by that time simply acclimatised to captive conditions.

#### 2.1.5 FILTRATION

Typhlonectids are messy feeders and shed their skin often. It is easy for detritus to accumulate in aquaria and therefore, large filters are vital. Internal box filters are only sufficient for neonates and small juvenile animals, or for adult tanks at low density and/or heavy plant growth. External canister filters are more suitable for adults because they provide a larger surface area for biological filtration. Large air-driven sponge filters are also suitable. Filter media should be cleaned on a regular basis (depending on the size of the filter and the stocking density), media should be cleaned in tank water rather than tap water because the change in parameters can be detrimental to the nitrifying bacteria, that are vital for biological filtration. Live plants, provided that they are growing and not simply slowly dying, can also help to improve and stabilise water quality as well as remove toxins from the water column.

Juvenile and adult animals can easily find their way into the internal mechanisms of filters. For this reason, it is vital that any way into the filter is blocked up with mesh or sealed with silicone.

#### 2.1.6 pH

pH does not appear to be of great significance in the husbandry of typhlonectids; however, it would be advisable to avoid extremes, rapid or constant fluctuations.

It has been reported that a drop in pH from pH 5-6 to 5 was one of the factors attributed to the breeding of *T. natans* (Parkinson, 2004). pH 5 is extremely acidic and probably not optimal when maintaining *T. natans* in captivity.

Tapley and Acosta (2010) reported pH in the range of 6-7 in the Magdalena valley of Colombia in November (Table 2). Where possible, parameters from the field should be replicated in captivity.

In the Natural History Museum, directly moving *T. compressicauda* from pH ca.4 to pH ca.6–7 resulted in skin problems and, in some cases, death.

At Sedgwick County Zoo *P. kaupii* are maintained at a pH of 7.8-8.2.

In the wild, *Typhlonectes* often inhabit blackwater environments with high tannin content. Tannins act as antimicrobials and also suppress pH, and seem to contribute positively to the husbandry of this genus in captivity. Tannins may be added to water through commercial additives (e.g. Tropol, produced by JBL), or through inclusion of tannin-rich substances such as dead oak leaves, peat or bog wood in aquaria. Tannins may be used to achieve acidic pH while still including some mineral content in the water (at ZSL an alkalinity of c. 70mg/L, which would normally have a pH of c. 7.5, is maintained with a pH of 6.5 through the use of Tropol at a concentration much higher than the dose recommended by the manufacturer: c. 2ml per L water). Whichever route is taken, effects on pH should be carefully measured. At Paignton Zoo, a piece of bogwood released so much tannin into an aquarium that it suppressed pH below 5, causing health issues with *T. natans*.

### 2.1.7 HARDNESS AND ALKALINITY

Kowalski (2001) reports that *T. natans* may die if the hardness of the water exceeds 5.6dH (100PPM).

At Sedgwick County Zoo a breeding group of *P. kaupii* are maintained in relatively alkaline water ranging from 82-227 mg/L. Hardness (as CaCO<sub>3</sub>) ranges 120-130 mg/L.

### 2.1.8 DISSOLVED OXYGEN

*P. kaupii* have an increased reliance on cutaneous gas exchange and it is highly likely that they have a requirement for more dissolved oxygen than *Typhlonectes* species. Air stones are used at ZSL London Zoo and Sedgwick County Zoo to increase the dissolved oxygen content of the water. At ZSL London Zoo the outflow of the filter was positioned at the surface of the water as this also increases the oxygen content of the water. Moderate water flow, provided that refugia from current are available, may be beneficial in preventing the formation of hypoxic pockets of water.

### 2.1.9 LIGHTING

Standard aquarium lighting with a 12:12 photoperiod seems to be sufficient for the maintenance of typhlonectids and is appropriate due to their tropical distribution. All species prefer dark conditions, so if lighting is included for plant growth and/or aesthetics/public viewing, the animals must have access to dark refuges.

The UVB requirement of typhlonectids is unknown. However, as the animals were frequently found resting on half-submerged floating cork bark at Jersey Zoo, adult specimens were exposed to UVB radiation (70 µW/cm<sup>2</sup> at the surface of the water) using a Zoo Med ReptiSun® 5.0 with reflector for 14 months on a 12:12 light cycle, X-rays pre and post UVB exposure revealed no changes in bone mineralisation. Bone mineralisation was considered good to begin with and all of the specimens were of captive bred origin and had never been exposed to UVB emitting lights.

## 2.2 FEEDING

Feeding of typhlonectids is recommended 2 to 3 times a week. In their first year, juvenile animals should be offered food at least three times a week. Typhlonectids probably locate their food via olfaction. Juvenile *T. natans* have been observed

swimming up and down an enclosure with jaws open and pressed down against the substrate, the jaws close immediately when they encounter the food item (B. Tapley, pers. obs.). Typhlonectids can be conditioned to hand feed which can help to ensure all specimens are fed suitable amounts. When possible, live food should be offered, because it does not break down immediately and so causes fewer issues with water quality in the short term. However, typhlonectids do not appear to be active vertebrate hunters so while live invertebrates including worms and insect larvae will be consumed live, vertebrate components of the diet (especially fish) will typically not be captured live, and dead items must be offered.

### **2.2.1 BASIC DIET**

A huge variety of food will be readily accepted by typhlonectids including both live and dead land invertebrates (e.g. crickets, earthworms, beetle larvae etc), thawed fish (both freshwater and saltwater fish), crustacea, molluscs, pinkie mice, shrimp blood-worm as well as commercially available amphibian pellet. Many groups of fish are high in thiaminase, which breaks down vitamin B12 even under frozen conditions. Thiaminase is present in both freshwater and marine fish; among freshwater fish (to which typhlonectid diets should be limited due to salt content), cyprinid (carp family) fish are especially rich in thiaminase and should only form part of a varied diet. Salmonid fish are low in thiaminase, but extremely high in oils, and so should not be used as a standard diet, either. The risk of ill health associated with dietary deficiencies and hypovitaminosis can be decreased by offering captive specimens a varied diet.

### **2.2.2 SPECIAL DIETARY REQUIREMENTS**

Adding dietary supplements to the food of aquatic animals can be difficult. At Jersey Zoo, Nanovits produced by Vetark were trialled over a three-month period. 0.2mls were injected into a food item and given to each caecilian once a month for three months. It was noted that the vitamins leached out into the water from the injection site, the effectiveness of the supplement could not be quantified, and staff did not know if the Nanovit could be an irritant to the caecilians if it were to go into solution. As the nutritional requirements of caecilians are unknown, it is probably better to offer a wide variety of food items as a varied diet containing fresh prey that has been fed a natural and balanced diet.

The mouths of *P. kaupii* are relatively smaller than the mouths of *T. compressicauda* and *T. natans*. Keepers at Sedgwick County Zoo offer *P. kaupii* smaller prey items relative to the prey items they offer *T. natans*. However, typhlonectids are typically capable of tearing off pieces of food from larger items.

### **2.2.3 METHOD OF FEEDING**

Food can be placed in the aquaria in different locations to ensure all the inhabitants get the chance to feed. Larger animals tend to consume food items more quickly than smaller ones and so can potentially deprive smaller animals of their share. Animals can accept food offered to them on forceps and this may be beneficial in ensuring that all specimens have the opportunity to feed. At Chester Zoo, dead crayfish or fish were submerged and attached to a branch where caecilians spent significant amounts of time feeding, pulling at pieces of flesh. This not only provided visitors with the opportunity to

see how typhlonectid caecilians feed, but also increased their visibility during feeding times (G. Garcia, pers. com.).

### 2.3 SOCIAL STRUCTURE

Typhlonectids do not appear to be territorial (Warbeck & Parzefall, 2001); however, during the breeding season males may become aggressive to one another. Typhlonectids appear to prefer to share refugia with other animals and are anecdotally reported to do better when housed in colonies of multiple animals, rather than singly. Typhlonectids may bite each other when hurriedly trying to find and ingest food.

#### 2.3.1 CHANGING GROUP STRUCTURE

Introducing a new male to an enclosure which already houses both males and females during the breeding season should be avoided.

#### 2.3.2 SHARING ENCLOSURE WITH OTHER SPECIES

Because *T. natans* have been reported to feed on small fish, so it is best to avoid adding these to an enclosure housing typhlonectids. Piscivory appears to be largely limited to dead and dying fish, however, and exhibits containing *Typhlonectes* and a variety of small fish of appropriate geographic origins (e.g. tetras) are often very successful. There were no reported problems when keeping typhlonectids with larger fish, providing the fish are not predatory. In the wild, Moodie (1978) noted that *T. compressicauda* was toxic to some fish. *T. natans* have been kept successfully alongside another aquatic caecilian, *P. kaupii* and the pipid frog *Pipa pipa*. At Sedgwick County Zoo, stressed *P. kaupii* released a skin secretion after being handled that killed fish maintained in the same aquarium. Be aware though, that aquarium fish commonly harbour Mycobacteria which have the potential to affect amphibians and human skin.

A variety of fish species including *Aequidens pulche*, *Astyanax magdalenae*, *Cyphocharax magdalenae*, *Hyphessobrycon inconstans*, *Pimelodus blochii*, *Poecilia caucana*, *Prochilodus magdalenae* and *Triportheus magdalenae* are reported from the fishing village of Guarinócito where several *T. natans* were observed by Tapley & Acosta (2010).

Housing typhlonectids alongside species originating from different geographical origins could expose specimens to novel pathogens, or result in one or both species being exposed to suboptimal conditions. This should be avoided in captivity.

### 2.4 BREEDING

In captivity *T. natans* are relatively frequently bred. Some zoological institutions in the United States have bred *T. natans* to F5. *T. compressicauda* have also been bred in captivity (Mark Wilkinson pers. comm.). Sedgwick County Zoo have successfully bred *P. kaupii* (Fig. 21.) on multiple occasions (N. Nelson pers. obs.).





Figure 21. Recently born *P. kaupii* at Sedgwick County Zoo.

#### 2.4.1 MATING

In captivity, *T. natans* mate throughout the year. Parkinson (2004), noted that mating commenced in July when water levels were lowered to 18 cm, and the pH decreased to pH5 (from pH 5-6) and nitrates levels were increased (from dH3). Parkinson made these changes to the water chemistry in an attempt to replicate dry season conditions with low water. pH can be lowered by filtering water through peat moss (Bailey *et al*, 2005). Kowalski (2001) reports that the lowering of total hardness of aquarium water can induce breeding and recommends the hardness should be halved providing that hardness does not drop below 1 dH (17.8PPM). Hardness can be lowered with the addition of distilled or reverse osmosis water. At Jersey Zoo, *T. natans* bred when the temperature regime in Fig. 16 was implemented.

At Sedgwick County Zoo and ZSL London Zoo, *P. kaupii* are kept and bred without any seasonal changes of water temperatures or chemistry (N. Nelson, pers. obs.). Indeed, stability in conditions both in terms of physical housing (refuges, individuals in the group and the actual tank used) as well as chemical (water chemistry and quality) are often associated with successfully breeding colonies of typhlonectids, and changes to any of these factors might be detrimental to the health and reproduction of historically successful and stable colonies.

#### 2.4.2 GESTATION PERIOD

A gestation period of 43 weeks has been reported for *T. natans* in captivity (Parkinson, 2004). Young can be detected via ultrasound from early stages of development (< 2 months). Once further developed, foetuses can be observed via ultrasound moving within the oviduct of the female, the sac like gills can also be observed. During mid to late stages of development (> 5 months), once the skeleton of the foetuses has become calcified, a radiograph image may clearly show the developing foetuses within the adult (Fig.22). This method is particularly useful for estimating the number of foetuses present.

A gestation period of 24 – 30 weeks has been reported for *T. compressicauda* in captivity (Bruins *et al*, 1999; Exbrayat & Delsol, 1985).

The gestation period of *P. kaupii* is unknown. At Sedgwick County Zoo gestation period is estimated to be between 6-10 months with females first appearing gravid in the early autumn and give birth late autumn / early winter (N. Nelson, pers. obs.). At Sedgwick county Zoo, water temperatures are increased to 29°C for the duration of the gestation

period as this improved survival rate of neonates (N. Nelson, pers. obs.). At ZSL London Zoo, females first appeared gravid (i.e. became noticeably rotund) in early spring and gave birth in mid-June.

### 2.4.3 BIRTH

*T. compressicauda* give birth to a recorded maximum of 8 young over a period of several days (M. Wilkinson Pers. obs.) which measure between 100 – 140mm (Bruins, 1999).



Figure 22. A radiograph of a gravid *T. natans*. Note the obvious PIT tag towards the posterior end of the body.

*T. natans* give birth to 1 – 11 young, this process may take place over multiple birthing events during up to seven days in which one to three young are born at a time. Birth may take place during the night or early morning. Some evidence may suggest that in

captivity environmental change may trigger birth in *T. natans*, although experiences with this have been conflicting (Chester Zoo). In one instance, a heavily pregnant female known to be carrying seven young as identified on radiograph to be of appropriate size for birth, was removed from an aquarium with a water depth of 60 cm with fast flowing filtration, and placed in an aquarium with a water depth of 17 cm. The aquarium had a water temperature of 26-28 °C (PH 6.8 – 7.0) and contained sunken leaf litter and gentle filtration, after five days four young were born overnight, the following three were born 24 hours later.

On a separate occasion, a heavily pregnant female which was transferred to shallow water but failed to give birth after one month in these conditions, upon returning to an aquarium with increased depth and water flow, all young were born within 48 hours. Although conflicting, this may suggest that some form of environmental manipulation may influence the release of young. In more than one instance, females that were not provided with environmental change were found dead within aquaria, one containing seven large (<20 cm) fully developed young that had died within the female. A post mortem of this individual showed developing ova alongside fully developed young, some of which had already begun decomposition, which was the likely cause of death in the female. This may also support the benefit of some form of environmental stimulus to encourage birth.

Two authors (Wake, 1994; Parkinson 2004) have observed female *T. natans* carrying young on their backs to the water surface for their first breaths of air. There have been reports of adult animals attempting to eat neonates (Kowalski, 2001).

In captivity *P. kaupii* give birth to 1-9 young. One gravid female that died contained 14 well developed young (N. Nelson, pers. obs.).

#### **2.4.4 DEVELOPMENT AND CARE OF YOUNG**

Young should not be separated from the adults after birth given their tendency to aggregate with one another. Although there are reports of adult animals attempting to eat neonates (Kowalski, 2001), this has not been observed by the authors and the risk is considered low. Additional material should be added (e.g. floating plants, cork bark, twigs etc.) to the enclosure to aid as young are weaker swimmers and may drown. It may be several weeks before young will take food but once they begin feeding, they should be provided food more frequently than adult specimens. The young of *T. natans* nearly double their weight at birth within 3 months (Fig. 23) and will accept a variety of food items including many also used for adults, fish carcasses are readily accepted, even large fish can be used for groups of young which will actively carcass feed, care must be taken when using such food items to maintain water quality.

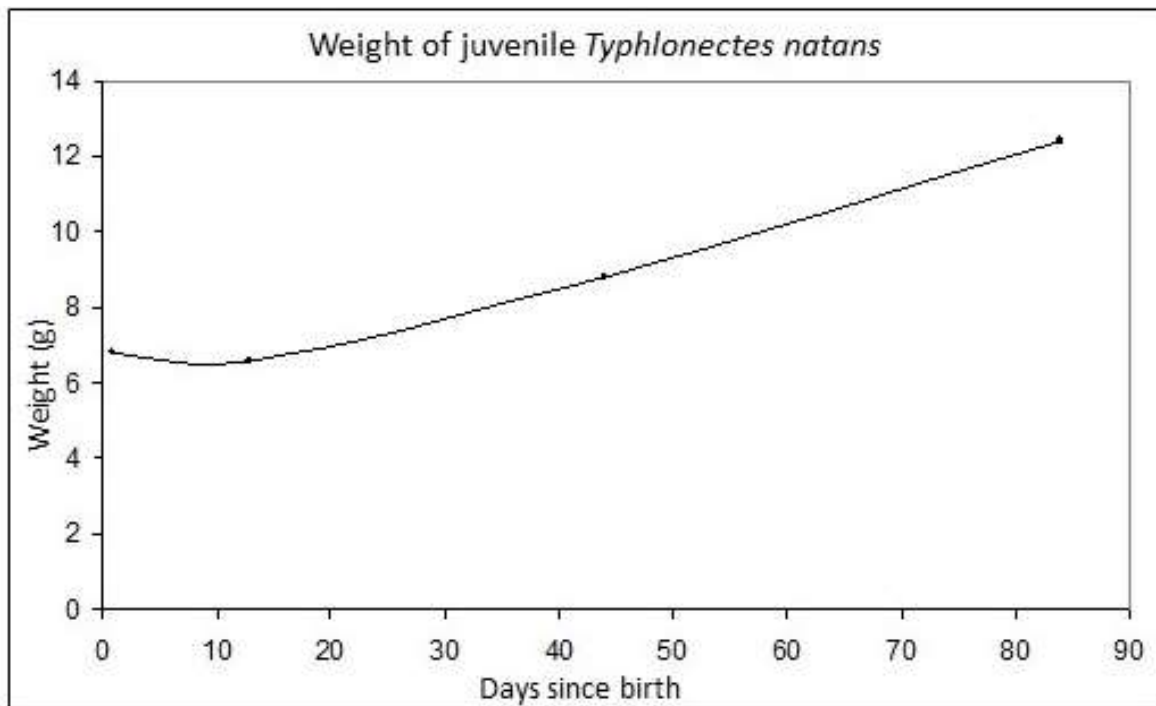


Figure 23. Average weight of juvenile *T. natans* after birth.

#### 2.4.5 POPULATION MANAGEMENT

Captive populations of typhlonectid caecilians are not formerly managed. The populations of *T. natans* and *T. compressicauda* in EAZA collections are monitored by the Amphibian Taxon Advisory Group. The validation of standardised marking techniques would assist the establishment of EEPs should this be desired in future.

#### 2.5 BEHAVIOURAL ENRICHMENT

Behavioural enrichment is an important component of captive husbandry and can enhance the welfare of individuals. Behavioural enrichment has been understudied in amphibians (Michaels et al. 2014) and this may be a result of a lack of understanding of amphibian cognition in general. Prolonging feeding times by offering small scattered food items or tethering a large food item to enclosure furnishings may be potentially enriching for typhlonectid caecilians.

#### 2.6 HANDLING

Caecilians should be handled as little as possible, and they often thrash around when grabbed. Gloves should always be used when handling amphibians to avoid disease transmission and damage and injuries to the animals themselves. Research (Cashins & Alford, 2008) suggests that latex and nitrile gloves can have lethal effects on *Xenopus* tadpoles. The potential lethal effect of gloves on caecilians has not yet been investigated.

##### 2.6.1 INDIVIDUAL IDENTIFICATION AND SEXING

It is difficult to individually identify individual typhlonectids. Gower *et al* (2006) successfully used Alpha-numeric fluorescent tags to mark the terrestrial caecilian *Gegeneophis ramaswamii*. Passive integrated transponder (PIT tag) has also been used

with success on adult individuals maintained at Chester Zoo; implanted PIT tag can be seen on radiograph image presented in Fig. 22. Freeze branding has also been used to mark caecilians (Gower *et al.*, 2006) although this technique may not be ethically sound. To insert the PIT tags, animals need to be anaesthetised because they can be difficult to restrain. Tags should not be implanted parallel to the main axis of the body, but transversally and maintained within the anterior and posterior edges of the annuli. Immersions in a 0.1% MS222 bath at a pH of 7.2 until righting reflex is lost should give enough time for marking (Javier Lopez, pers comm.).

The sexes can only be externally reliably determined in mature animals. Males have relatively larger, more bluntly rounded posterior ends with somewhat wider cloacal discs (Fig. 24) (Stebbins & Cohen, 1995). The cloacal discs of females appear more slit like and elongated (Wilkinson, 1989). In *Potomotyphlus* (Fig. 24) and *T. compressicauda*, the cloacal disc is especially large and the flat circular end of the body is very apparent from a dorsal aspect of the animal.



Figure 24. Cloacal disc of male *T. natans* (Top left) and female *T. natans* (Top right). Cloacal disc of male *P. kaupii* (Bottom left) and female *P. kaupii* (Bottom right).



### 2.6.2 CATCHING / RESTRAINING

A net should be used to capture typhlonectids. Restraint can be difficult due to the large amounts of mucus secreted by typhlonectid caecilians when handled. Anaesthesia may be necessary for marking individuals or for delicate veterinary procedures. Immersions in a 0.1% MS222 bath at a pH of 7.0-7.4 until righting reflex is lost should give enough time for minor procedures such as microchipping, ultrasound scanning, etc. For longer procedures such as surgery, keep in bath for 2-3 more minutes and then remove, rinse and place in fresh water. Depth of anaesthesia is monitored by response to a skin pinch, if there is a reaction, it needs to be returned to the anaesthetic bath until response disappears again. Water bath used during prolonged anaesthetics should be aerated with oxygen to increase levels solution as thus increase diffusion through skin.

### 2.6.3 TRANSPORTATION

Typhlonectids can be transported in ventilated boxes on wet / water soaked paper towel of moss (between two pads of paper); sphagnum moss should be avoided, however, because it is extremely acidic. In temperate climates care should be taken that the animals are not transported in cold periods.

### 2.6.4 SAFETY

Typhlonectids do not pose a threat to keepers. However, Moodie (1978) found that skin secretions of *T. compressicauda* were toxic to the coexisting predatory fish *Hoplias malabaricus*. When handled, *P. kaupii* can secrete a substance from their skin that is capable of killing tetras that are housed in the same enclosure (N. Nelson, pers. obs.). If the mucus of typhlonectids comes in contact with the eyes or with cuts, it causes a burning sensation (Stebbins & Cohen, 1995). It has been reported that prolonged exposure to the mucus of *T. compressicauda* can lead to a tingling sensation in the hands (Mark Wilkinson, pers comm.). As with all aquatic vertebrates, there is the potential of Mycobacterium infections, which can also affect human skin.

## 2.7 VETERINARY CARE AND SPECIFIC MEDICAL PROBLEMS: CONSIDERATIONS FOR HEALTH AND WELFARE

### 2.7.1 CLINICAL ANATOMY AND PHYSIOLOGY.

The integument is vascular and permeable to water (Clayton & Mylniczenko, 2015), detailed skin structure has been described in *Ichthyophis tricolor* and *Uraeothyphlus oxyurus*, showing an epidermis and dermis containing mucous and granular glands (Arun *et al.*, 2018). In some species these glands that can produce substances that can produce irritation to mucous membranes (O'Reilly *et al.*, 1996) and may have an antiprotozoal activity (Pinto *et al.*, 2014).

Caecilians do not have vestigial limbs, thoracic or pelvic girdles, the ribs do not support the body (O'Reilly *et al.*, 1996).

The liver, kidney, spleen and thymus have a haematopoietic role as caecilians lack functional bone marrow (Wright, 2001).

In many species, only the right lung is developed and functional (Prabha *et al.*, 2000) while one species does not possess lungs (Wilkinson & Nussbaum, 1997). The ventilatory cycle consists in a long expiration and a series of short inspirations aided by buccopharyngeal pumping, the respiratory rate in *T. natans* is 4-7 breaths per hour (Prabha *et al.*, 2000).

Gas exchange occurs by a combination pulmonic, buccopharyngeal and cutaneous mechanisms, oxygen uptake occurs through pulmonic while carbon dioxide elimination takes places through the skin (Gardner *et al.*, 2000).

Terrestrial caecilians appear to be uricotelic while aquatic species are ammoniotelic (Stiffler & Talbot, 2000). A bilobate urinary bladder is present in some species (Clayton & Mylniczenko, 2015).

Eyes are covered by skin or bone while lack of external and middle ear is common in most species. Olfaction, aided by chemosensory and tactile external tentacles connected to vomeronasal organ and nervous system in some species, is the main method to locate prey (Clayton & Mylniczenko, 2015).

Presence of prominent fat bodies in the caudal third of the body in *T. natans* needs to be considered for diagnostic imaging purposes and surgery. (Barbon *et al.*, 2017).

### 2.7.2 PHYSICAL EXAMINATION AND DIAGNOSTICS

Water quality assessment should be a basic step while assessing the health status in this species including parameters such as temperature, pH, ammonia, nitrite, nitrate and dissolved oxygen.

Visual examination in the enclosure may reveal non-specific clinical signs such as abnormal swimming, spending time and head bobbing in and out of the water. Visual assessment of body condition should consider fluid accumulation in the coelomic cavity in presumptive overweight animals.

Skin examination can be carried out in and outside of the water as certain abnormalities may change appearance significantly. Impression smears and skin scrapes can be carried out from lesions such as ulcerations or areas with mucous strips. The cloacal disc should be examined closely as erythema in this area is a non-specific sign of disease.

Faecal parasitology including direct examination and flotation can be carried out, specific species of nematodes such as *Pharyngodon Boulengerula* have been described in caecilians (Ubelaker, 1965), a survey of faecal parasitology results in captive caecilians (*T. natans*, *Dermophis mexicanus*, *Schistometopum thomense*, *Ichthyophis kohtaoensis*) showed presence of unidentified flagellates, ciliates, coccidia, nematodes and cestodes, including parasites from food items such as *Monocystis* sp. trophozoites from earthworms or mites from rodents (Mylniczenko, 2006).

Fine needle aspirate from lesions, organs of fluid in coelom can be carried out for diagnostic purposes.

Blood sampling is done by cardiocentesis under general anaesthesia, the heart can be located easily in the cranial third of the body by doppler or ultrasound. A limited range of haematological and biochemistry parameters in *Dermophis mexicanus*, *T. natans*, *T/ compressicauda* and *Boulengerula taitanus* are available in Clayton & Mylniczenko (2015). *Hepatozoon* sp. has been observed in blood smears of wild caecilians in the Seychelles islands without any reported clinical implications. (Harris et al, 2014)

Radiography can be carried out with the animals conscious by placing the animals in a rigid clear plastic tube; radiographs have been used for the diagnosis of pregnancy.

Ultrasonography can be carried out with the animal submerged in water.



Figure 25. Cloacal disc erythema in a *Typhlonectes natans* at post-mortem



Figure 26. Radiographs to diagnose pregnancy, notice how cranial in the mother's body the larvae can displace.

### 2.7.3 DISEASES

Dermatitis has been reported as the most common medical problem encountered in certain captive caecilian species as cause of morbidity and mortality, associated with *Saprolegnia* sp and subcutaneous nematode migration (Mylniczenko, 2006). Nematode migration will cause localized subcutaneous swellings and white plaques on the epidermis surface (O'Reilly, 1996). Nematodes may break the skin causing open skin wounds (Wake, 1994) and haemorrhage (Carsten Kirkeby, pers. comm.). Kowlaski (2001) reports that neonate *T. natans* are more susceptible to fungal infections at temperatures lower the 25.6°C. The fungal dermatitis has been observed as multiple raised, white cotton wool like spots on the surface of the skin. Fungal dermatitis can be diagnosed by microscopic examination of a fresh skin scrape (Javier Lopez, pers comm.). Fungal dermatitis has been treated successfully in *T. natans* using itraconazole.



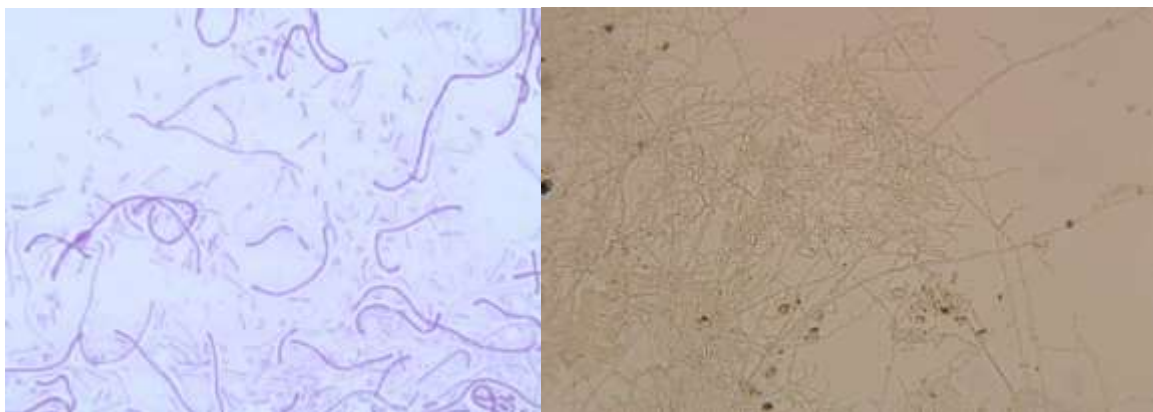
Figure 27. White cotton like cutaneous lesions associated with fungal organisms, noted ante mortem in a *Typhlonectes natans*.

A variety of bacteria have been also isolated from cutaneous lesions in captive caecilians including *Acitenobacter johnsoni*, *A. junii*, *Aeromonas hydrophila*, *Chormobacterium violaceum*, *Comamonas testosterone*, *Fusarium* sp, *Moraxela nonliquafaciens*, *Pseudomonas aeruginosa*, *P. alcaligenes* and *Streptococcus* sp. (Mylniczenko, 2006).

Septicaemia has been described as a cause of morbidity and mortality, specimens showed ventral erythema, especially noticeable in the cloacal disc, and lethargy ante mortem. Bacteria isolated from coelomic cavity and blood included *Aeromonas hydrophila*, *Bacillus* sp., *Brevimundis vesicularis*, *Citrobacter freundii*, *Enterobacter cloacae*, *Enterococcus* sp, *Escherichia coli*, *Morganella morganii*, *Providencia* sp, *Staphylococcus epidermis* and *Vibrio alginolyticus* (Mylniczenko, 2006). Septicaemia has been treated with a variety of parenteral antibiotics; the bacteria mentioned may provide a guide for the specific antibiotic selection in absence of culture and sensitivity results.



Figures 28. Dermatitis post mortem with intralesional fungi and bacteria observed in histology.



Figures 29. Stained and non-stained fungal hyphae, suspected to be *Saprolegnia* sp obtained from a skin scrape in an animal affected by dermatitis.

Neotropical caecilians, including typhlonectids, are known to be sometimes infected with the amphibian chytrid fungus *Batrachochytrium dendrobatidis* in nature (Rendle *et al.*, 2015; Lambertini *et al.*, 2017), but lethal chytridiomycosis has not been proven and the effects of this pathogen on this family of caecilians have not been established. Mortality associated with chytridiomycosis infection has been documented in typhlonectid caecilians (Raphael and Pramuk, 2007; Churgin *et al.*, 2013; Rendle *et al.*, 2015). Temperatures of 32.2°C for 72 hours cleared chytrid infection in *T. natans* (Churgin *et al.* 2013). Itraconazole treatment successfully cleared chytrid infection in the dermophid caecilian *Geotrypetes seraphini* (Rendle *et al.*, 2015). Newly imported *P. kaupii* that had not been in contact with any other amphibians between the time of collection and screening have tested positive for *Batrachochytrium dendrobatidis* (Rendle *et al.*, 2015) and *P. kaupii* that underwent a prophylactic 30-minute immersion in a 0.01% solution of the antifungal itraconazole for a period of 11 days did not exhibit any discernible side effects (Rendle *et al.*, 2015). Chytrid has also been identified in asymptomatic wild species, routine quarantine and chytrid screening should be part of animal transfers between institutions.

Toxicity has been reported associated with some therapeutic agents including malachite green, methylene blue (Clayton & Mylniczenko, 2015) levamisole, flubendazole (see therapeutics). Environmental toxicity due to ammonia and copper has been described (Mylniczenko, 2006).



Typhlonectids are escape artists. Lids of aquaria must be heavy and extremely tight fitting. If they escape, they may rapidly desiccate and die. Recovered escapees may require intracoelomic fluid administration, placement in shallow baths with electrolytes (e.g. Amphibian ringers) and administration of antimicrobials to prevent secondary infections due to the damage of the cutaneous barrier.

Trauma caused by conspecifics or enclosure furniture, including burns has been described as part of captive caecilian morbidity (Mylniczenko, 2006). Wounds may take several weeks to heal by second intention, requiring an increased hygiene and prophylactic antimicrobial treatment to prevent secondary bacterial infections. Kowalski (2001) reports that temperatures as high as 32.2°C can cause thermal stress in *T. natans*. Data in Fig. 7 should be used as a guide when maintaining *T. natans* in captivity.

Cloacal prolapse has been described in caecilians, leading in some cases to mortality due to additional complications (Mylniczenko, 2006).

Renal (tubular ectasia, glomerulonephritis, nephritis and polycystic kidneys) and hepatic pathology (hepatic lipidosis, hepatitis) have been described during post mortem examination (Mylniczenko, 2006).

Uterine rupture during pregnancy leading to secondary septicaemia has been observed in a *T. natans*, oxytocin was used ante mortem in this specimen. (Barbon *et al.*, 2017)

#### **2.7.4 THERAPEUTICS**

No pharmacokinetic and pharmacodynamic studies have been carried out in caecilians species. Caecilians are reported to have lower metabolic rates than other amphibian species (Stiffler & Talbot, 2000), this may need to be taken into consideration while extrapolating dosages from other species.

A variety of antibiotics has been used without any obvious side effects including amikacin 5 mg/kg every 72 hours intramuscularly (IM) and ceftazidime mg/kg 20 mg/kg IM. Subcutaneous injections of enrofloxacin at 10mg/kg have been used for both for normal and broken down surgical wounds. Daily 6-hours enrofloxacin baths (8 mg/litre) for three weeks has been used for treatment of dermatitis but this dose shows a significant discrepancy with dose suggested in the literature; 500mg/litre every 6-8 hours once a day, although it is necessary to point out that water baths containing antibiotics may not provide as consistent distribution as parenteral administration (Whitaker & McDermott, 2018)

Itraconazole 0.01 % baths once a day 10-30 minutes/day for 10-11 days has been used successfully for treatment of fungal dermatitis and chytridiomycosis.

Meloxicam 0.2 mg/kg IM has been used intramuscularly post operatively.

A product containing essential oil from the Cajeput tree (*Melaleuca leucadendra*) (Melafix, API) has been as an antibacterial at just over half the recommended dose

(following manufacturer's guidelines) with *T. natans* with open wounds with no reported problems.

Levamisole 200-300 mg/L immersion bath for over 12 hours caused flaccid paralysis in two specimens in a group of six *Typhlonectes natans*, but shorter exposure times did not have any deleterious effects (Mylniczenko, 2006).

Mortality was observed in a group of *T. natans* when they were placed in a tank that had previously been treated with flubendazole, despite the tank having two 90% water changes before the addition of the animals. Toxicity was suspected, although conclusive evidence was not found in post mortem examination.

Fungal dermatitis has been observed in typhlonectids. Kowlaski (2001) reports that neonate *T. natans* are more susceptible to fungal infections at temperatures lower than 25.6°C. The fungal dermatitis has been observed as multiple raised, white cotton wool like spots on the surface of the skin. Fungal dermatitis can be diagnosed by microscopic examination of a fresh skin scrape (Javier Lopez, pers comm.). Fungal dermatitis has been treated successfully in *T. natans* using Itraconazole baths (3 parts Itraconazole to 100 parts water). The specimen concerned was bathed for five minutes daily for eleven days.

Traumatic wounds can take several months to heal. Daily 6-hour baths of Enrofloxacin for a period of three weeks have been successful in treating such injuries.

### 2.7.5 ANAESTHESIA

Chemical immobilization is reported to be achieved with buffered (to a neutral pH) tricaine methanesulfonate at 1-3 grams per litre for induction and maintained with 100-200 milligrams per litre. (Whitaker *et al.*, 1999).

Anaesthesia to carry out three caesarean sections in two *T. natans* used only 1 gram per litre for induction and no anaesthetic for maintenance (Barbon *et al.*, 2017). Three baths were prepared prior to the surgery; one with 1 gram of tricaine methanesulfonate per litre of tank water, buffered at 7.2 pH with sodium bicarbonate. A second bath was similarly prepared with 0.5 g in 1 litre of water and one containing amphibian ringer solution (1 L of distilled water, 6.6 g NaCl, 0.15 g KCl, 0.15 g CaCl<sub>2</sub>, and 0.2 g NaHCO<sub>3</sub>). Baths were prepared in trays containing about 1 cm depth of fluid and maintained at 26-28 C. Oxygen at 1 litre per minute was perfused into the baths.

Anaesthesia induction was achieved by placing animals in a clear plastic bag with anaesthetic solution at 1 gram per litre. Loss of the righting reflex occurred between 6 and 8 minutes, following induction animals were kept in amphibian Ringers' bath without anaesthetic agent.

The initial exposure to anaesthetic agent produced surgical anaesthesia for 20-40 minutes; in one case pain response was noted while closing the body wall, which required placing the animal in the 0.5 gram per litre bath while the wound was being sutured. The animals recovered the righting reflex between 70 and 180 minutes from the initial exposure to anaesthetic bath.



Figure 30. Surgical set up with multiple baths containing different anaesthetic concentration and no anaesthetic.

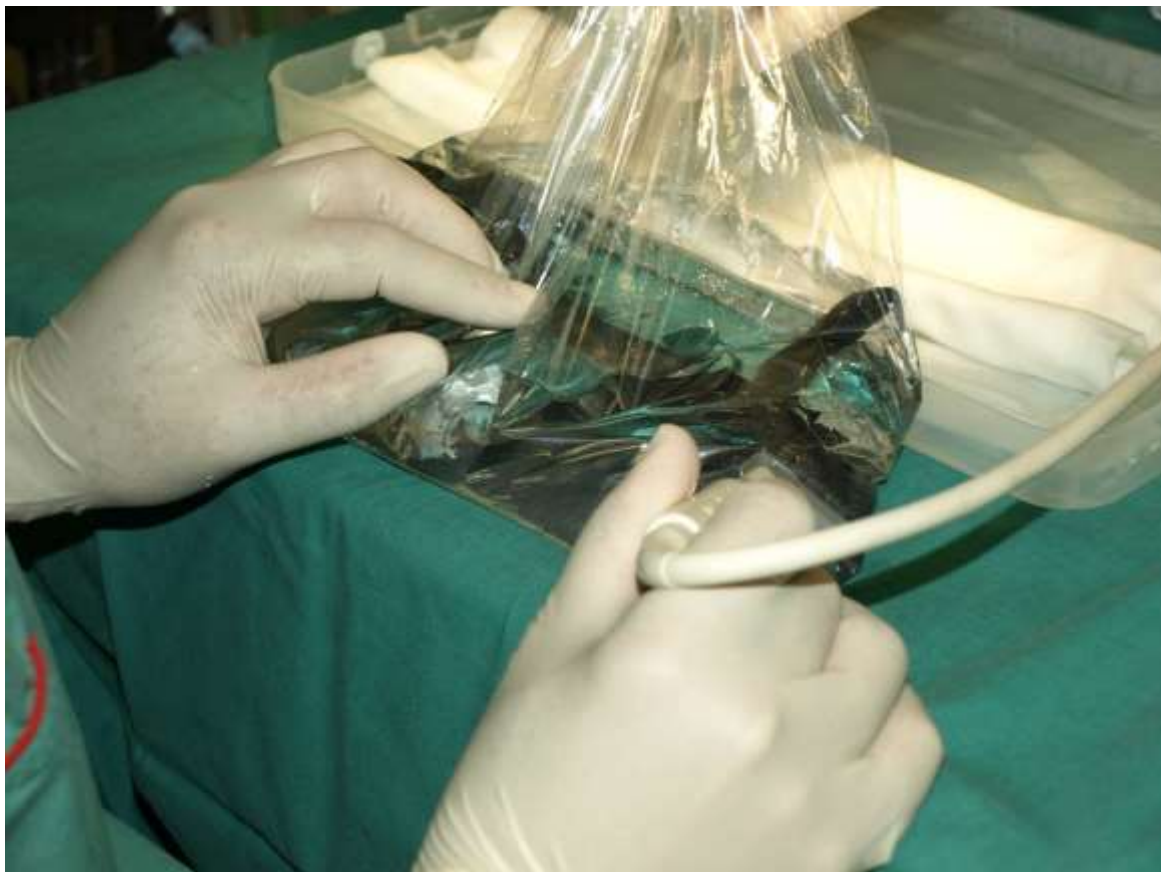


Figure 31. Determination of basal heart rate prior to anaesthesia using ultrasound.



Figure 32. Heart rate monitoring during anaesthesia using ultrasound.

Basal heart rate was between 72 and 75 beats per minute, while during anaesthesia to 50-55 beats per minute.

No spontaneous respirations were observed during these procedures; in *T. natans*, the respiratory rate has been reported to double in response to aerial hypoxia while aquatic hypoxia did not have any effects, aquatic hypercapnia tripled the respiratory rate (Gardner *et al.*, 2000), additional research into the anaesthetic effects and physiological responses in this species is required.

#### 2.7.6 SURGERY

Coeliotomy has been performed successfully to excise a portion of mineralized necrotic fat (Sykes *et al.*, 2006), caesarean sections (Barbon *et al.*, 2017) and partial enterectomy-anastomosis (Clayton & Mylniczenko, 2015).

Access to coelom is done through a paramedial incision, prominent fat bodies are present in *T. natans*, in the caudal aspect of the body that may difficult the access to the organs in this section of the body.

Polydioxanone has been used for the closure of the coelomic membrane and uterus while polydioxanone and nylon has been used to close the skin (Barbon *et al.*, 2017, Sykes *et al.*, 2006). Partial skin wound breakdown post operatively was noted in one case in which polydioxanone was used to close the skin, suspected to be caused by





Figure 33. Incision in the caudoventral portion of the body, about 10 centimetres cranial to the cloaca allowing exposure of the uterus to perform a caesarean. Notice the presence of fat bodies.

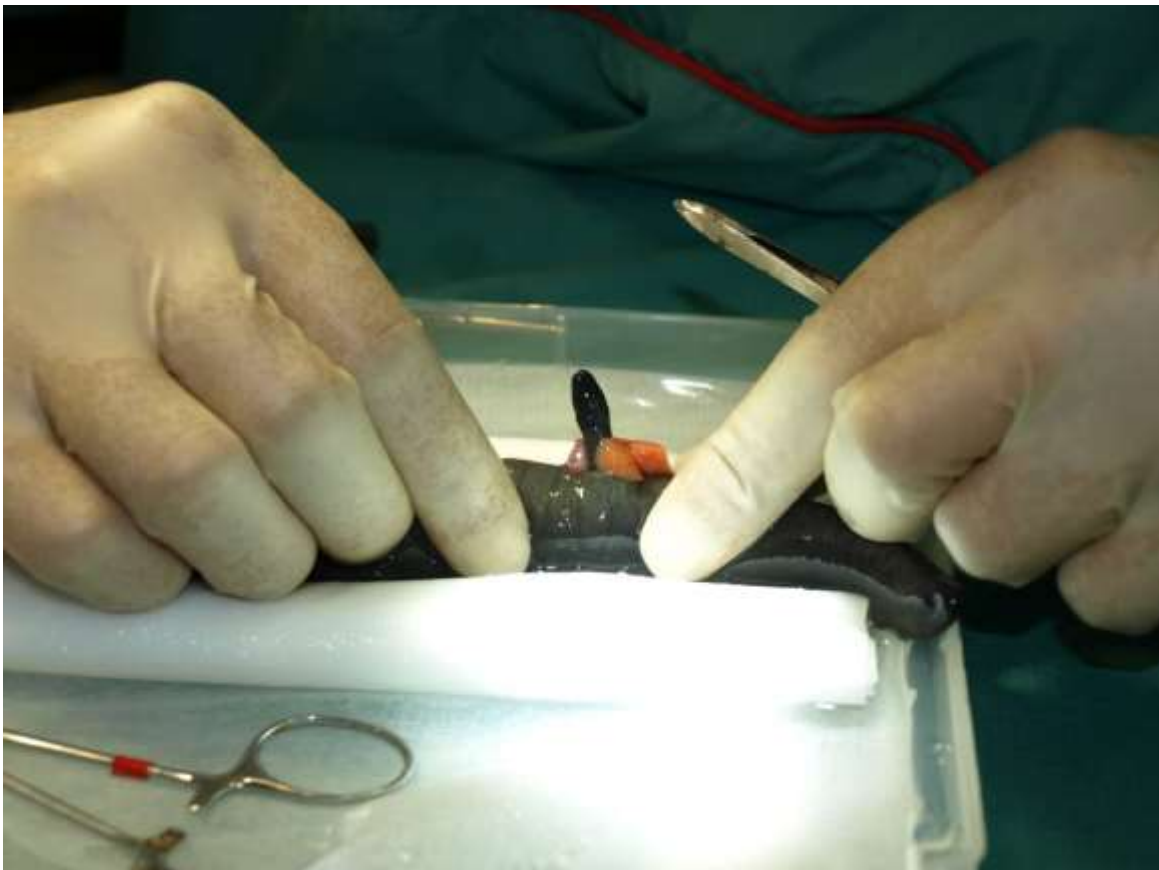


Figure 34. Applying pressure in both sides of the uterine incision



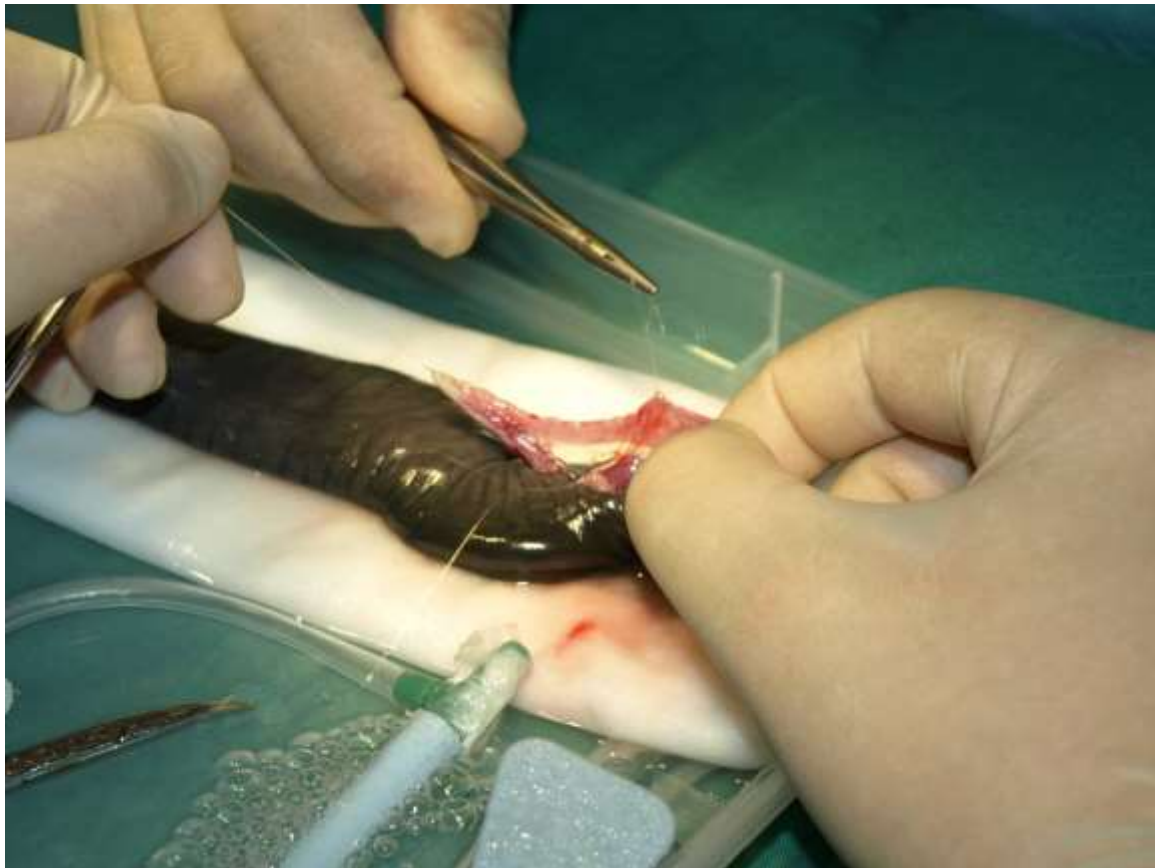


Figure 35. Uterus closure following caesarean section, notice stay sutures on the sides of the uterine incision.



Figure 36. Skin closure using an everting pattern.



Figure 37. Neonate after extracting from uterus, notice gills that will be shed naturally, shallow water and substrate is provided to facilitate the animal taking breaths.

faster absorbable suture material degradation in an aquatic environment (Barbon *et al.*, 2017).

Wound surgical management has been described for the treatment of a tail wound in a caecilian. (Poll, 2009).

## 2.8 RECOMMENDED RESEARCH

Although they are more familiar to keepers and in some cases exposed to more scientific research, relatively little is known about the biology of typhlonectids. Accurate record keeping is essential and wherever possible morphometric measurements as animals mature should be taken. There is conflicting information on the reproductive triggers for typhlonectids in captivity. Typhlonectid caecilians have also tested positive for *Batrachochytrium dendrobatidis*, the causative agent of the disease chytridiomycosis. Treatment of *Batrachochytrium dendrobatidis* infections in caecilians has had mixed success. Further research into the epidemiology of the disease in caecilians as well as treatment protocols also require further research.

## ACKNOWLEDGEMENTS

Thanks to the late Henk Zwartepoorte and to Ian Stephen for all their help and support in producing an earlier version of these guidelines. Sincere thanks to Andres Acosta-

Galvis for his time, support and input into collecting field data in Colombia. Thank you to Gerardo Garcia, Ilze Duncce and Javier Lopez, for their valuable input. DJG and MW are very grateful to Philippe Gaucher (CNRS) and to Gabriela Bittencourt Silva for help in obtaining and exporting typhlonectids from French Guiana, and for discussions about their captive care.

### SECTION 3. REFERENCES

- Acosta-Galvis, A.R., Lasso, C.A. & Morales-Betancourt, M.A. 2014. Nuevo registro del cecilido *Typhlonectes compressicauda* (Duméril & Bibron 1841)(Gymnophiona: Typhlonectidae) en la Amazonia colombiana. *Biota Colombiana*,15: 118–123.
- Alves-Silva, K.R., Mercês, M.P., dos Santos, A.L. & Ramos, L.C. 2017. Note on the distribution of the caecilian *Potamotyphlus kaupii* (Berthold, 1859) (Gymnophiona: Typhlonectidae) in Brazil. *Herpetology Notes* 10: 395–396.
- Bailey, M., Evans, S., Fletcher, N., Green, A., Hiscock, P., Lambert, P & Robinson, A. 2005. 500 ways to be a better tropical fish keeper Interpet publishing: Dorking
- Barbon, A.R., Goetz, M., Lopez, J. & Routh, A. 2017. Uterine rupture and caesarean surgery in three Rio Cauca caecilians (*Typhlonectes natans*). *Journal of Zoo and Wildlife Medicine* 48: 164–170.
- Bittencourt-Silva, G.B. & Wilkinson, M. 2018. First record of predation on the caecilian *Microcaecilia unicolor* (Duméril, 1863). *Herpetology Notes* 11: 641–644.
- Bruins, E. 1999. The complete encyclopedia of terrarium. Grange Books, Rochester 320pp.
- Cashins, S.D. & Alford, R. 2008. Lethal effect of Latex, Nitrile, and Vinyl Gloves on Tadpoles. *Herpetological review* 39: 298–301.
- Churgin, S.M., Raphael, B.L., Pramuk, J.B., Trupkiewicz, J.G. & West, G. 2013. *Batrachochytrium dendrobatidis* in aquatic caecilians (*Typhlonectes natans*): A series of cases from two institutions. *Journal of Zoo and Wildlife Medicine* 44: 1002–1009.
- Clayton, L.A. & Mylniczenko N.D. 2015. *Caecilians. Fowler's Zoo and Wild Animal Medicine* Volume 8. Elsevier Saunders: St Louis. pp 20-26.
- Damodaran, A., Beyo, R.S., Kotharambath, R., Mohammad A.A., Oommen, O.V. & Lekha, D. 2018. Light and electron microscopic observations on the organization of skin and associated glands of two caecilian amphibians from Western Ghats of India. *Micron* 106: 59–68.
- Duellman, W.E. & Trueb, L. 1994. *Biology of amphibians*. Johns Hopkins University Press, Baltimore, Maryland.
- Exbrayat, J.M. & Delsol, M. 1985. Reproduction and growth of *Typhlonectes compressicaudas* – A viviparous Gymnophione. *Copeia* 4: 950–955
- Gardner, M.N., Smits, A.W. & Smatresk, N.J. 2000. The ventilatory responses of the caecilian *Typhlonectes natans* to hypoxia and hypercapnia. *Physiological and Biochemical Zoology* 73: 23–29.
- Garlick, R.L., Davis, B.J., Farmer, M., Fyhn, H.J., Fyhn, U.E., Noble, R.W., Powers, D.A., Riggs, A. & Weber, R.E, 1979. A fetal-maternal shift in the oxygen equilibrium of hemoglobin from the viviparous caecilian, *Typhlonectes compressicauda*. *Comparative Biochemistry and Physiology Part A: Physiology* 62: 239–244.
- Gonzalez R.C., Gomes, D.F., Prado, P.C., Quinhones, R. & Salles, R.D. 2018. Regurgitating *Micrurus corallinus* (Serpentes, Elapidae) reveals another record for the rare caecilian

- Chthonerpeton* aff. *braestrupi* (Gymnophiona, Typhlonectidae). *Herpetology Notes* 11: 663–5.
- Gower, J.R., Oommen, O.V. & Wilkinson, M. 2006. Marking Caecilians with Alpha Numeric Fluorescent Tags: Caecilians Lead the Way. *Herpetological review* 37: 302
- Gower, J.R. & Wilkinson, M. 2005. The conservation biology of caecilians. *Conservation Biology* 19: 45–55.
- Gymnophiona.org website. 2008. < <http://www.gymnophiona.org/> > Accessed on 19 August 2008.
- Harris, D.J., Damas-Moreira, I., Maia, J.P.M.C. & Perera, A. 2014 First report of hepatozoon (Apicompleza: Adeleorina) in caecilians, with description of a new species. *Journal of parasitology* 100: 117–120.
- Herman, H. 1994. Amphibien im Aquarium. Ulmer Verlag: Stuttgart.
- Hofer, D. 2000. A Short note about the status and abundance of caecilian populations. *Froglog* December 2000 (42)
- IUCN, Conservation International, and NatureServe. 2006. Global Amphibian Assessment. [www.globalamphibians.org](http://www.globalamphibians.org) . Accessed on 19 August 2008.
- Kowalski, E. 2001. *Typhlonectes natans*: Care and maintenance in captivity of the Rio Cauca caecilians *Reptilia* 30: 57–60.
- Kupfer, A., Gower, D.J. & Himstedt, W. 2003. Field observations on the predation of the caecilian amphibian, genus *Ichthyophis* (Fitzinger, 1826), by the red-tailed pipe snake *Cylindrophis ruffus* (Laurenti, 1768). *Amphibia Reptilia* 24: 201–234.
- Kupfer, A., Gaucher, P., Wilkinson, M. & Gower, D.J. 2006. Passive trapping of aquatic caecilians (Amphibia: Gymnophiona: Typhlonectidae). *Studies on Neotropical Fauna and Environment* 41: 93–96.
- Lambertini, C., Becker, C.G., Bardier, C., da Silva Leite, D. & Toledo, L.F. 2017. Spatial distribution of *Batrachochytrium dendrobatidis* in South American caecilians. *Diseases of aquatic organisms* 124: 109–116.
- Lynch, J.D. 2006. The amphibian fauna of the Villavicencio region of eastern Colombia. *Caldasia* 28: 235–155.
- Maciel, A.O. & Hoogmoed, M.S. 2011. Taxonomy and distribution of caecilian amphibians (Gymnophiona) of Brazilian Amazonia, with a key to their identification. *Zootaxa* 2984: 1–53.
- Marty, C., Ravet, E., Bordage, D. & Lescure, J. 2007. Redécouverte de *Potomotyphlus kaupii* (Berthold, 1859) (Amphibia, Gymnophiona, Typhlonectidae) en Guyane française. *Bulletin Société Herpétologique de France* 121: 35–36.
- Moodie, G.E.E. 1978. Observations on the life history of the caecilian *Typhlonectes compressicaudus* in the Amazon Basin. *Canadian journal of Zoology* 56: 1005–8.
- Michaels, C.J., Downie, J. R. & Campbell-Porter, R. 2014. The importance of enrichment for advancing amphibian welfare and conservation goals: A review of a neglected topic. *Amphibian & Reptile Conservation* 8:7–23.
- Müller, J. 1831. Beiträge zur anatomie und naturgeschichte der amphibien. *Zeitschrift für Physiologie* 4: 190-275.
- Mylniczenko, N.D. 2006. A medical health survey of diseases in captive caecilian amphibians. *Journal of Herpetological Medicine and Surgery* 16: 120–128.
- Oliveira, U.S.C., Meneghelli, D., Messias, M.R., Gomes, I.B.S.R. & Coragem, J.T. 2013. First record of *Potomotyphlus kaupii* (Berthold, 1859) (Gymnophiona: Typhlonectidae) for the state of Rondônia, Brazil. *Herpetology Notes* 5:155–156.



- O'Reilly, J.C., Fenolio D. & Ready, M. 1996. Keeping caecilians in captivity. *Advances in Herpetoculture* 1: 39–45.
- Parkinson, R. 2004. The care and captive breeding of the caecilian *Typhlonectes natans*. *The Herpetological Bulletin* 88: 8–10.
- Pinto, E.G., Antoniazzi, M.M., Jared, C. & Tempone, A.G. 2014. Antileishmanial and antitrypanosomal activity of the cutaneous secretion of *Siphonops annulatus*. *Journal of Venomous Animals and Toxins including Tropical Diseases* 20:50
- Pough, F.H., C.M. Janis & J.B. Heiser. 2002. Vertebrate life (6<sup>th</sup> edition) Prentice Hall, New Jersey 699pp.
- Prabha, K.C., Bernard, K.G., Gardener M. & Snartesk N.J. 2000. Ventilatory Mechanics and the Effects on Breathing Pattern in the Aquatic Caecilian *Typhlonectes natans*. *The Journal of Experimental Biology* 203: 263–272.
- Raquet, M., Brun, C. & Exbrayat, J.M. 2017. Patterns of apoptosis and proliferation throughout the biennial reproductive cycle of viviparous female *Typhlonectes compressicauda* (Amphibia, Gymnophiona). *International journal of molecular sciences* 18: 16.
- Raphael, B.L. & Pramuk, J. 2007. Treatment of chytrid infection in *Typhlonectes* spp. using elevated water temperatures. In: Proceedings of Amphibian Declines and Chytridiomycosis, Tempe, AZ, abstracts.
- Reinhard, S. 2014. *Life history strategies and sexual dimorphism of the Amphibia with special emphasis on the Urodela (Newts and Salamanders) and the Gymnophiona (Caecilians)* (Doctoral dissertation, Thüringer Universitäts-und Landesbibliothek Jena).
- Rendle, M., Tapley, B., Perkins, M., Bittencourt-Silva, G., Wilkinson, M. & Gower, D.J. 2015. Itraconazole treatment of *Batrachochytrium dendrobatidis* (Bd) infection in captive caecilians, and the first case of Bd in a wild Neotropical caecilian *JZAR* 3: 137–140.
- San Mauro, D., Gower, D.J., Müller, H., Loader, S.P., Zardoya, R., Nussbaum, R.A. & Wilkinson, M., 2014. Life-history evolution and mitogenomic phylogeny of caecilian amphibians. *Molecular phylogenetics and evolution* 73:177–189.
- Sawaya, P. 1947. Metabolismo respiratório de anfíbio Gymnophiona, *Typhlonectes compressicauda* (Duméril et Bibron). *Boletim da Faculdade de Filosofia, Ciências e Letras, Universidade de São Paulo* 12: 51–56
- Stebbins, R.C. & Cohen, N.W. 1995. The natural history of Amphibians. Princeton University Press, New Jersey 316pp.
- Stiffler, D.F. & Talbot, C.R. 2000. Exchanges of oxygen, carbon dioxide, nitrogen and water in the caecilian *Dermophis mexicanus*. *Journal of Comparative Physiology* 170: 505–509.
- Sykes J.M., Reel D., Henry G.A., Fry M.M. & Smith S.H. 2006. Whole body edema and mineralized fat necrosis in an aquatic caecilian *Typhlonectes* sp. *Journal of Herpetological Medicine and Surgery* 16: 53–57.
- Tapley, B. & Acosta, A.R. 2010. Distribution of *Typhlonectes natans* in Colombia, environmental parameters and implications for captive husbandry. *The Herpetological Bulletin* 113: 23–29
- Taylor, E.H. 1968. The Caecilians of the World. A taxonomic review. University of Kansas Press. Lawrence, Kansas. 848 pp.



- Ubelaker, J.E. 1965 A new nematode, *Pharyngodon boulengerula*, from caecilian *Boulengerula uluguruensis*. *Proceeding of the helminthological society of Washington* 32: 113-114.
- Verdade, V.K., L.C. Schiesari & Bertoluci, J.A. 2000. Diet of juvenile aquatic caecilians, *Typhlonectes compressicauda*. *Journal of Herpetology* 34: 291–293
- Wake, M. H. 1994. Caecilians in Captivity. In: *Captive Management and Conservation of Amphibians & Reptiles* eds. J. B. Murphy, K. Adler & J.T. Collins. Society for the Study of Reptiles and Amphibians: Ithaca: 223– 28
- Wake, M. H. 1976. The development and replacement of teeth in viviparous caecilians. *Journal of Morphology* 148: 33–64
- Wake, M.H. 1977. Fetal maintenance and its evolutionary significance in the Amphibia: Gymnophiona. *Journal of Herpetology*, 11: 379–386.
- Warbeck, A., Breiter, I. & Parzefall, J. 1996. Evidence for chemical communication in the aquatic caecilian *Typhlonectes natans* (Typhlonectidae, Gymnophiona). *Mémoires de biospéologie* 23: 37–41.
- Warbeck, A. & Parzefall J. 2001. Mate recognition via waterborne chemical cues in the viviparous caecilian *Typhlonectes natans* (Amphibia: Gymnophiona). In *Chemical signals in vertebrates 9*, ed. A. Marchlewska-Koj, J.J.Lepri & D. MüllerSchwarze, Kluwer Academic/Plenum: New York: 263–68.
- Wells, K.D. 2010. *The ecology and behavior of amphibians*. University of Chicago Press, Chicago.
- Whitaker, B.R., Wright, K.M. & Barnett S.L. 1999. Basic husbandry and clinical assessment of the amphibian patient. *Exotic Animal Practice Veterinary Clinics of North America* 2: 265-290.
- Wilkinson, M. 1989. On the status of *Nectocaecilia fasciata* (Taylor) with a discussion of the phylogeny of the Typhlonectidae (Amphibia: Gymnophiona). *Herpetologica* 45: 23–36.
- Wilkinson, M. 1991. Adult tooth morphology in the Typhlonectidae (Amphibia: Gymnophiona): A reinterpretation of the variation and its significance. *Zeitschrift für Zoologische Systematik und Evolutionsforschung* 29: 304–311.
- Wilkinson, M. & Nussbaum, R.A. 1997. Comparative morphology and evolution of the lungless caecilian *Atretochoana eiselti* (Taylor) (Amphibia: Gymnophiona: Typhlonectidae). *Biological Journal of the Linnean Society* 62: 39–109.
- Wilkinson, M., Measey, J., La Marca, E., Coloma, L.A., Ron, S. & Castro, F. 2010. *Potamotyphlus kaupii*. The IUCN Red List of Threatened Species. Version 2014.3. <[www.iucnredlist.org](http://www.iucnredlist.org)>. Downloaded on 03 January 2015.
- Wilkinson, M., D. San Mauro, E. Sherratt & D. J. Gower. 2011. A nine-family classification of caecilians (Amphibia: Gymnophiona). *Zootaxa* 2874: 41–64.
- Wright, K.M. 2001. Anatomy for the clinician. In *Amphibian medicine and captive husbandry*. Krieger publishing: Malabar: pp 15-30.

**APPENDIX – Post mortem of female *T. natans***

